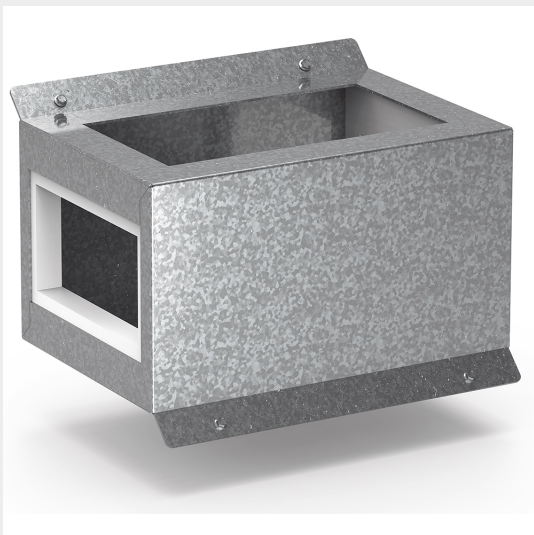




BTICINO > ZUCCHINI busbar > RCP resin busbar IP68 > Formworks




6MLD4F06R


Horizontal formwork for flat installation of RCP busbar in resin with rated current 2500A (conductors CU)

Technical features

Protection index	IP68
Standard reference	IEC 61439-6
Rated voltage	1000V
Rated current	2500A
Series	RCP

Documentation

 [Busbar catalogue](#)

 [Catalogue RCP](#)