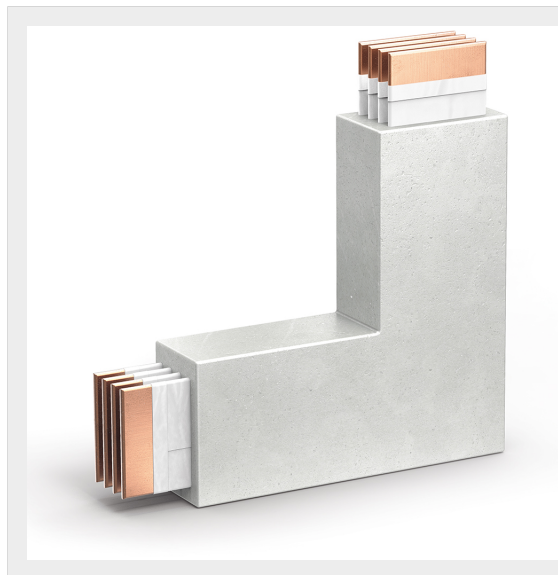


BTICINO > ZUCCHINI busbar > High power busbar > RCP resin busbar IP68 > Vertical elbows





**65280426R**

Vertical elbow RCP in resin IP68 - conductors CU - rated current 2000A

Technical features

Brand	BTicino
Standard reference	IEC 61439-6
Rated voltage	1000Vac
Rated current	2000A
Protection index	IP68
Series	RCP

Documentation

-  [Installation manual](#)
-  [PEP certification](#)
-  [Busbar catalogue](#)
-  [Catalogue RCP](#)