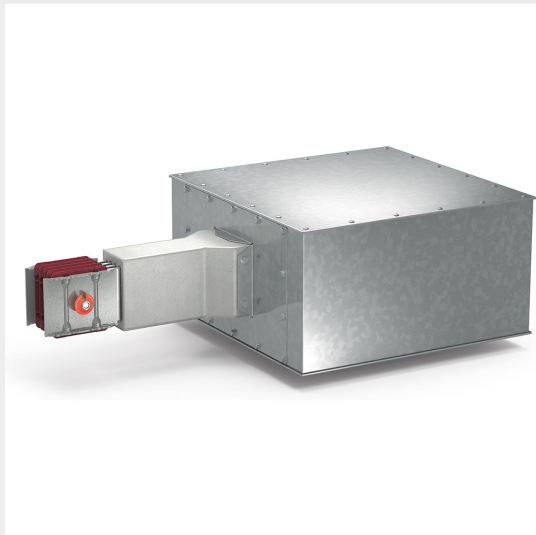


BTICINO > ZUCCHINI busbar > High power busbar > RCP resin busbar IP68 > Feed elements




**60391117R**

Power supply left RCP in resin - conductors AL - rated current 4000A

Technical features

Brand	BTicino
Standard reference	IEC 61439-6
Rated voltage	1000V
Rated current	4000A
Protection index	IP55
Series	RCP

Documentation

-  [Installation manual](#)
-  [Busbar catalogue](#)
-  [Catalogue RCP](#)