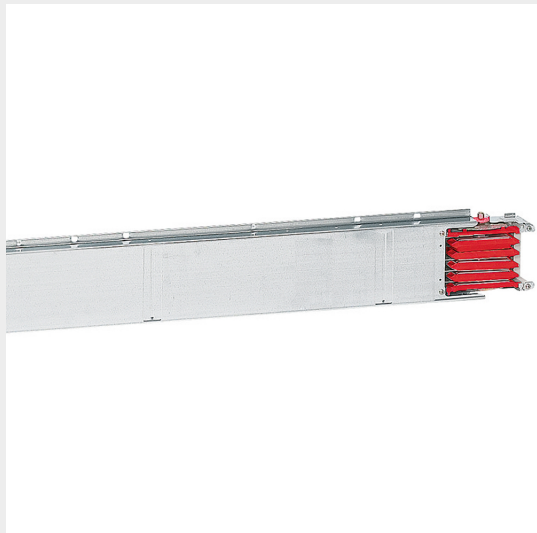


BTICINO > ZUCCHINI busbar > Medium power busbar > MR Medium Rating > Copper straight elements

55400242


Straight element MR250 Cu without outlets - In=250A - IP52 - length 3m



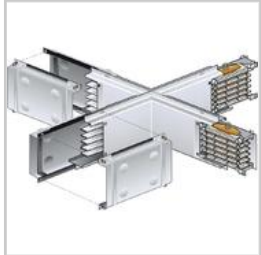
Technical features

Brand	BTicino
Standard reference	CEI EN 61439-6
Rated voltage	1000Vac
Rated current	250A
Protection index	IP55
Length	3m
Series	MR

Documentation

 [Installation manual](#) [Busbar catalogue](#)

Related products



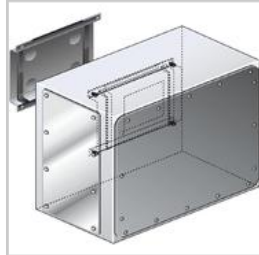
55403002

Cross element for
busbar MR Cu -
In=250A - IP55



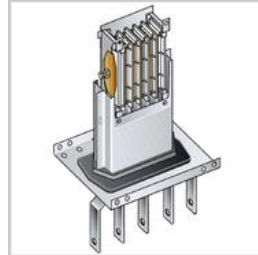
55401002

Right feed unit from
cabinet to transformers
for busbar in Cu MR250
- In=250A - IP55



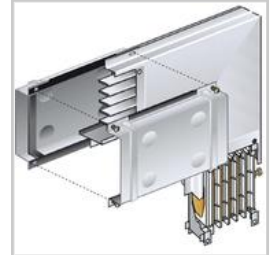
55401202

Intermediate feed unit
for busbar Cu MR250 -
In=250A - IP55



55401012

Left feed unit from
cabinet to transformers
for busbar in Cu MR250
- In=250A - IP55



55400412

Vertical elbow (left) in
Cu for MR250 - In=250A
- IP55



55400402

Vertical elbow (right) in
Cu for MR250 - In=250A
- IP55



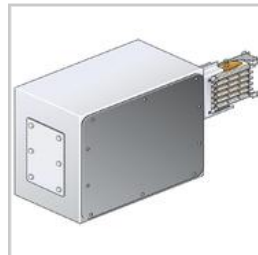
55400312

Horizontal elbow (left) in
Cu for MR250 - In=250A
- IP55 - length
300+300mm



55400302

Horizontal elbow (right)
in Cu for MR250 -
In=250A - IP55 - length
300+300mm



55401132

Left feed unit (BIG) for
busbar in Cu MR250 -
In=250A - IP55



55401122

Right feed unit (BIG) for
busbar in Cu MR250 -
In=250A - IP55