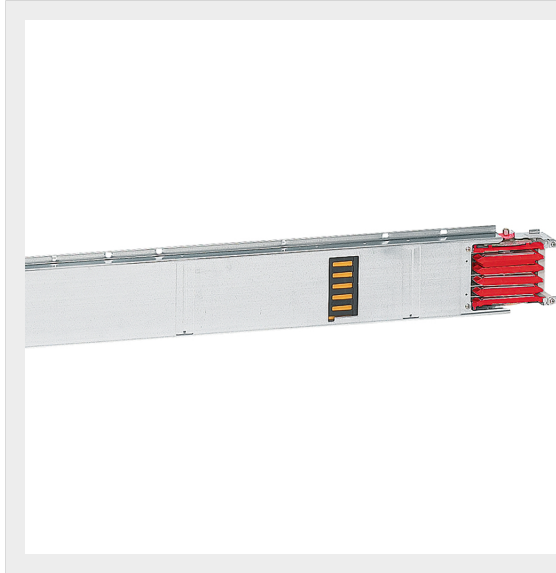




BTICINO > ZUCCHINI busbar > MR Medium Rating > Copper straight elements



55400145

Straight element MR630 Cu with 1+1 outlets for side - In=630A - IP52 - length 1-1.5m

## Technical features

Protection index	IP55
Length	11.5m
Standard reference	CEI EN 61439-6
N° of compartments	1+1
Rated voltage	1000V
Rated current	630A
Series	MR

## Documentation

 [Instructions Sheet](#)

 [Busbar catalogue](#)

## Related products



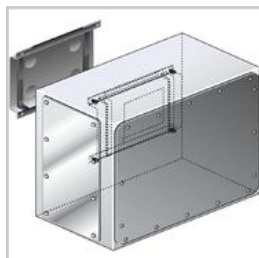
**55403005**

Cross element for busbar MR Cu - In=630A - IP55



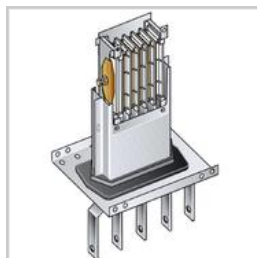
**55401005**

Right feed unit from cabinet to transformers for busbar in Cu MR630 - In=630A - IP55



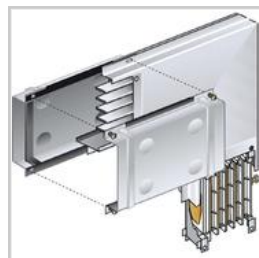
**55401205**

Intermediate feed unit for busbar Cu MR630 - In=630A - IP55



**55401015**

Left feed unit from cabinet to transformers for busbar in Cu MR630 - In=630A - IP55



**55400415**

Vertical elbow (left) in Cu for MR630 - In=630A - IP55



**55400405**

Vertical elbow (right) in Cu for MR630 - In=630A - IP55



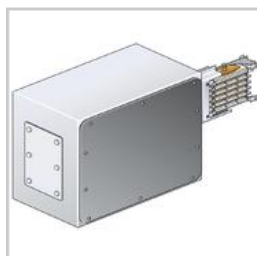
**55400315**

Horizontal elbow (left) in Cu for MR630 - In=630A - IP55 - length 300+300mm



**55400305**

Horizontal elbow (right) in Cu for MR630 - In=630A - IP55 - length 300+300mm



**55401135**

Left feed unit (BIG) for busbar in Cu MR630 - In=630A - IP55



**55401125**

Right feed unit (BIG) for busbar in Cu MR630 - In=630A - IP55