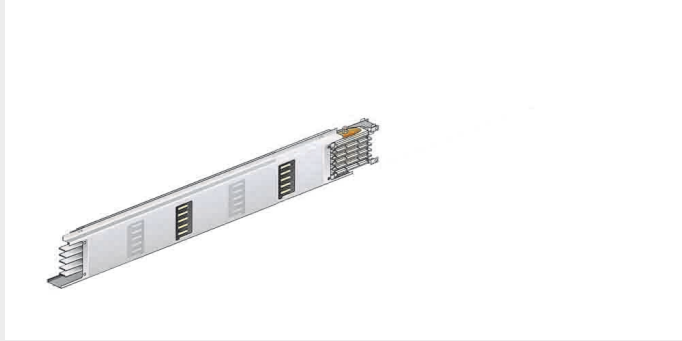


BTICINO > ZUCCHINI busbar > Medium power busbar > MR Medium Rating > Aluminium straight elements



**50400268-1200**

Data Center straight elements (IP40). Aluminium conductors and windows on both sides (2+2, step 600mm) - In=500A - IP40 - length 1,2m

Technical features

Brand	BTicino
Rated current	500A
Protection index	IP40
Length	1200 mm

Documentation

 [Instruction Sheet](#) [Busbar catalogue](#)

Related products



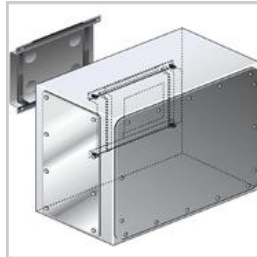
50401008

Right feed unit from cabinet to transformers for busbar in AI MR500 - In=500A - IP55



50401128

Right feed unit (BIG) for busbar in AI MR500 - In=500A - IP55



50401208

Intermediate feed unit for busbar AI MR500 - In=500A - IP55



50400308

Horizontal elbow (right) in AI for MR500 - In=500A - IP55 - length 300+300mm



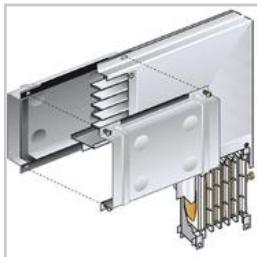
50400318

Horizontal elbow (left) in AI for MR500 - In=500A - IP55 - length 300+300mm



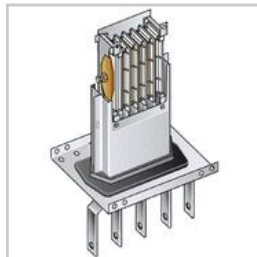
50400408

Vertical elbow (right) in AI for MR500 - In=500A - IP55



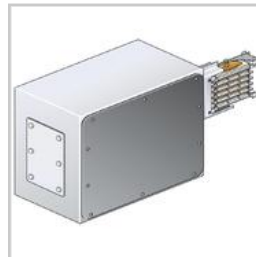
50400418

Vertical elbow (left) in AI for MR500 - In=500A - IP55



50401018

Left feed unit from cabinet to transformers for busbar in AI MR500 - In=500A - IP55



50401138

Left feed unit (BIG) for busbar in AI MR500 - In=500A - IP55