

BTICINO > ZUCCHINI busbar > Medium power busbar > MR Medium Rating > Aluminium straight elements

50400141




Straight element MR160 Al with 1+1 outlets for side - In=160A - IP52 - length 1-1.5m



Technical features

Brand	BTicino
Standard reference	CEI EN 61439-6
Rated voltage	1000Vac
Rated current	160A
Protection index	IP55
Length	11.5m
N° of compartments	1+1
Series	MR

Documentation

-  [Installation manual](#)
-  [Instruction Sheet](#)
-  [Environment. Product Declaration](#)

Related products



50403001

Cross element for busbar MR AI - In=160A - IP55



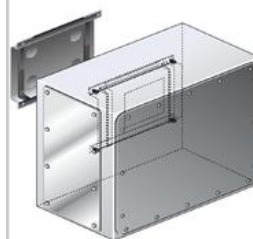
50401001

Right feed unit from cabinet to transformers for busbar in AI MR160 - In=160A - IP55



50401121

Right feed unit (BIG) for busbar in AI MR160 - In=160A - IP55



50401201

Intermediate feed unit for busbar AI MR160 - In=160A - IP55



50400301

Horizontal elbow (right) in AI for MR160 - In=160A - IP55 - length 300+300mm



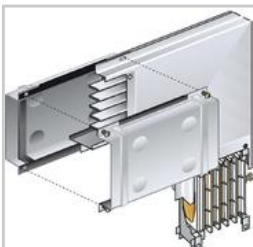
50400311

Horizontal elbow (left) in AI for MR160 - In=160A - IP55 - length 300+300mm



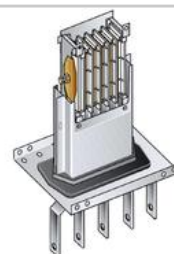
50400401

Vertical elbow (right) in AI for MR160 - In=160A - IP55



50400411

Vertical elbow (left) in AI for MR160 - In=160A - IP55



50401011

Left feed unit from cabinet to transformers for busbar in AI MR160 - In=160A - IP55



50401131

Left feed unit (BIG) for busbar in AI MR160 - In=160A - IP55