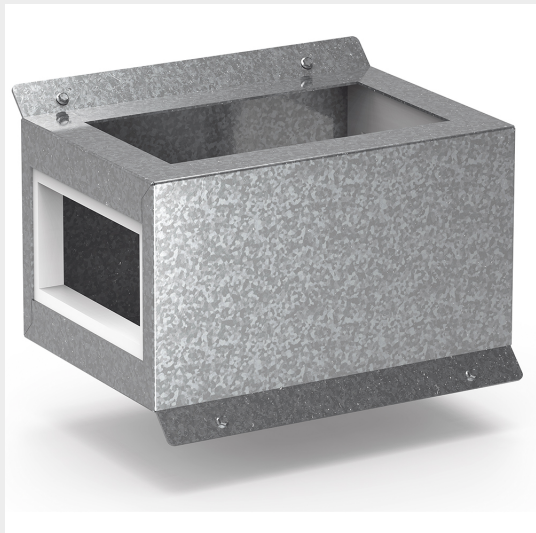


BTICINO &gt; ZUCCHINI busbar &gt; High power busbar &gt; RCP resin busbar IP68 &gt; Formworks






## 6MLD4F05R

Horizontal formwork for flat installation of RCP busbar in resin with rated current 1600A (conductors AL) and 2000A (conductors CU)

### Technical features

Brand	BTicino
Standard reference	IEC 61439-6
Rated voltage	1000Vac
Rated current	1600-2000A
Protection index	IP68
Series	RCP

### Documentation

-  [PEP certification](#)
-  [Busbar catalogue](#)
-  [Catalogue RCP](#)