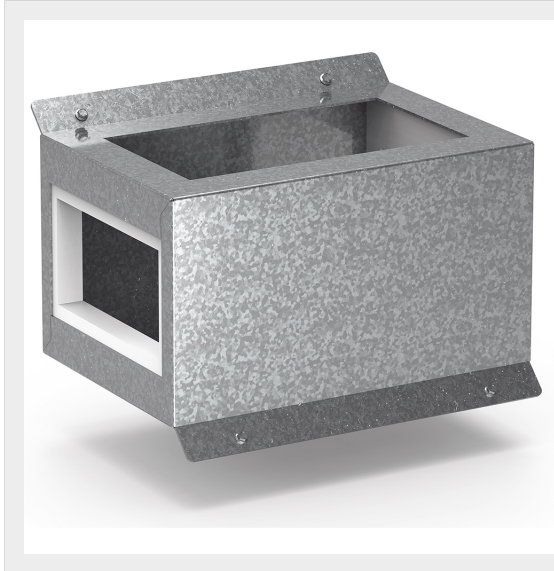




BTICINO > ZUCCHINI busbar > RCP resin busbar IP68 > Formworks



## 6MLD4F02R


Horizontal formwork for flat installation of RCP busbar in resin with rated current 800-1000A (conductors AL) and 1000-1250A (conductors CU)

### Technical features

Protection index	IP68
Standard reference	IEC 61439-6
Rated voltage	1000V
Rated current	800-1250A
Series	RCP

### Documentation

 [Busbar catalogue](#)

 [Catalogue RCP](#)