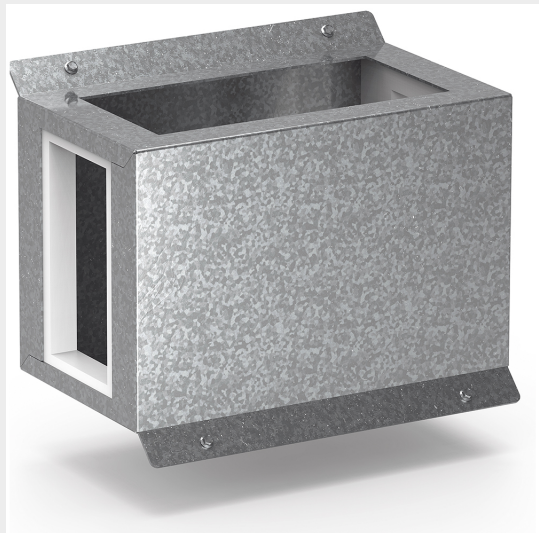


BTICINO > ZUCCHINI busbar > High power busbar > RCP resin busbar IP68 > Formworks



6MLD4E07R


Horizontal formwork for edgewise installation of RCP busbar in resin with rated current 2000A (conductors AL)

Technical features

Brand	BTicino
Standard reference	IEC 61439-6
Rated voltage	1000Va.c.
Rated current	2000A
Protection index	IP68
Series	RCP

Documentation

 [Busbar catalogue](#)

 [Catalogue RCP](#)