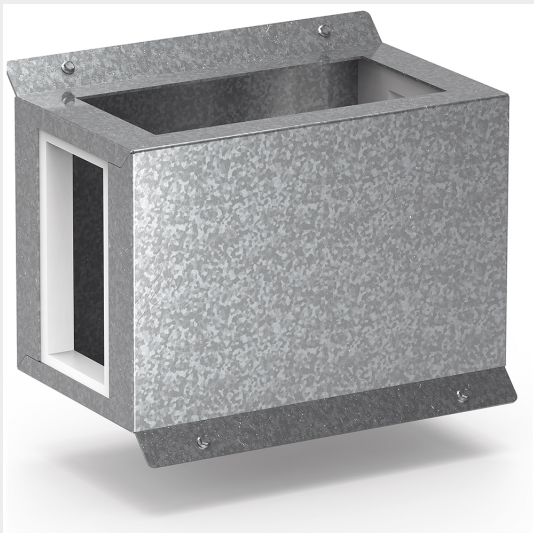




BTICINO > ZUCCHINI busbar > RCP resin busbar IP68 > Formworks



6MLD4E05R


Horizontal formwork for edgewise installation of RCP busbar in resin with rated current 1600A (conductors AL) and 2000A (conductors CU)

Technical features

Protection index	IP68
Standard reference	IEC 61439-6
Rated voltage	1000V
Rated current	1600-2000A
Series	RCP

Documentation

 [Busbar catalogue](#)

 [Catalogue RCP](#)