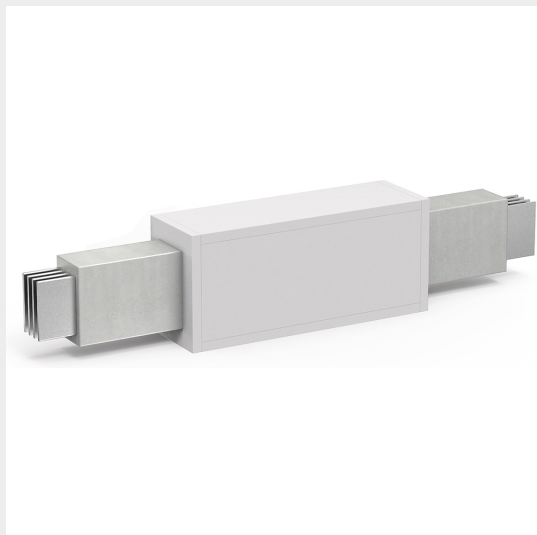


BTICINO > ZUCCHINI busbar > High power busbar > RCP resin busbar IP68 > Fire barrier

65EFB01R




External flame barrier for RCP busbar (AL 630A and CU 800A)



Technical features

Brand	BTicino
Standard reference	IEC 61439-6
Rated voltage	1000V
Rated current	630 - 800A
Protection index	IP68
Series	RCP

Documentation

-  [Installation manual](#)
-  [Busbar catalogue](#)
-  [Catalogue RCP](#)