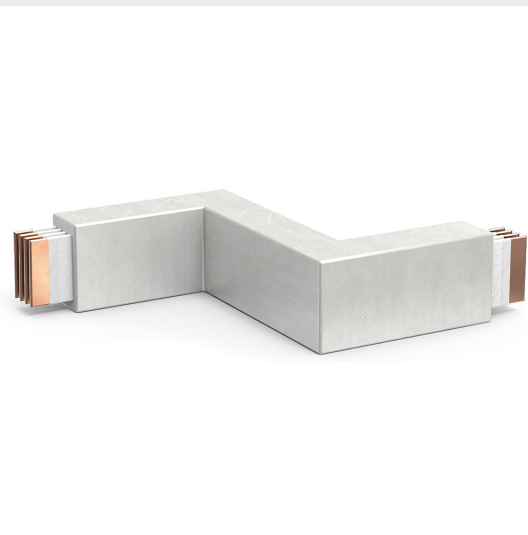


BTICINO &gt; ZUCCHINI busbar &gt; High power busbar &gt; RCP resin busbar IP68 &gt; Double horizontal elbows

**65390348R**Double horizontal elbow RCP in resin IP68 - conductors CU -  
rated current 5000A

## Technical features

Brand	BTicino
Standard reference	IEC 61439-6
Rated voltage	1000V
Rated current	5000A
Protection index	IP68
Series	RCP

## Documentation

-  [Installation manual](#)
-  [Busbar catalogue](#)
-  [Catalogue RCP](#)