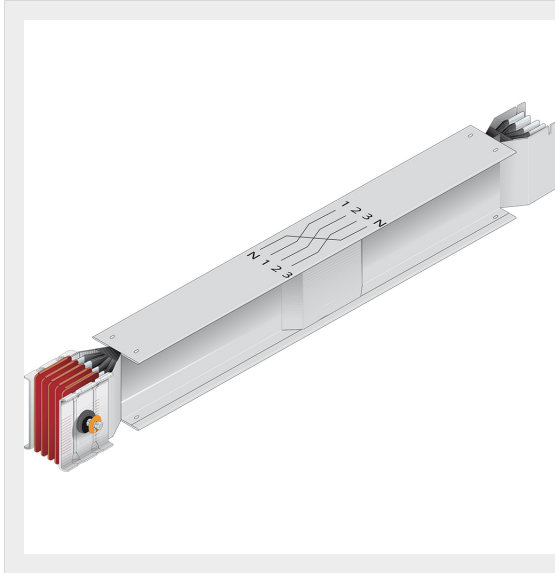


BTICINO > ZUCCHINI busbar > High power busbar > SCP Supercompact > Straight elements with neutral jump


**65287146P**

Straight element with neutral jump SCP Cu - In= 2000A

Technical features

Brand	BTicino
Standard reference	CEI EN 61439-6
Rated voltage	1000V
Rated current	2000A
Protection index	IP55
Series	SCP

Documentation

 [Busbar catalogue](#)