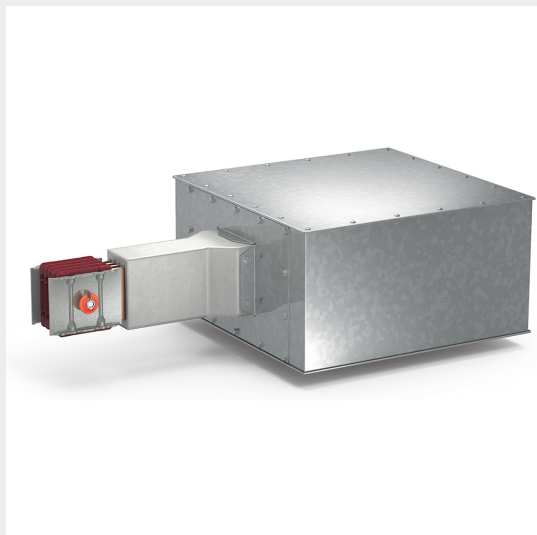


BTICINO &gt; ZUCCHINI busbar &gt; High power busbar &gt; RCP resin busbar IP68 &gt; Feed elements

**65281116R**

Power supply left RCP in resin - conductors CU - rated current 2000A

## Technical features

Brand	BTicino
Standard reference	IEC 61439-6
Rated voltage	1000Va.c.
Rated current	2000A
Protection index	IP55
Series	RCP

## Documentation

-  [Installation manual](#)
-  [Busbar catalogue](#)
-  [Catalogue RCP](#)