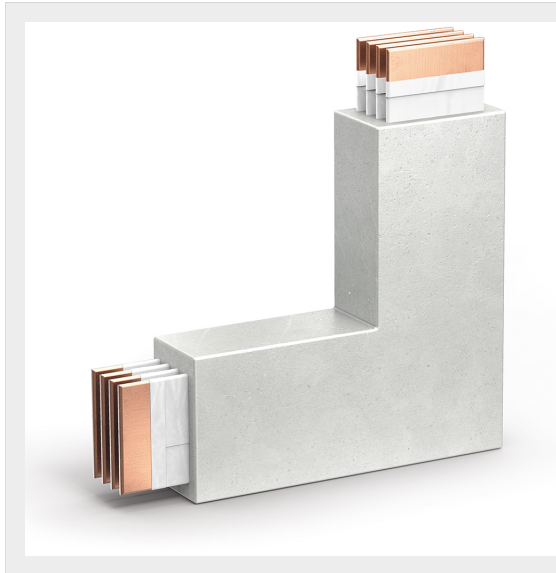


BTICINO &gt; ZUCCHINI busbar &gt; High power busbar &gt; RCP resin busbar IP68 &gt; Vertical elbows




**65280428R**

Vertical elbow RCP in resin IP68 - conductors CU - rated current 2500A

## Technical features

Brand	BTicino
Standard reference	IEC 61439-6
Rated voltage	1000Vac
Rated current	2500A
Protection index	IP68
Series	RCP

## Documentation

-  [Installation manual](#)
-  [Busbar catalogue](#)
-  [Catalogue RCP](#)