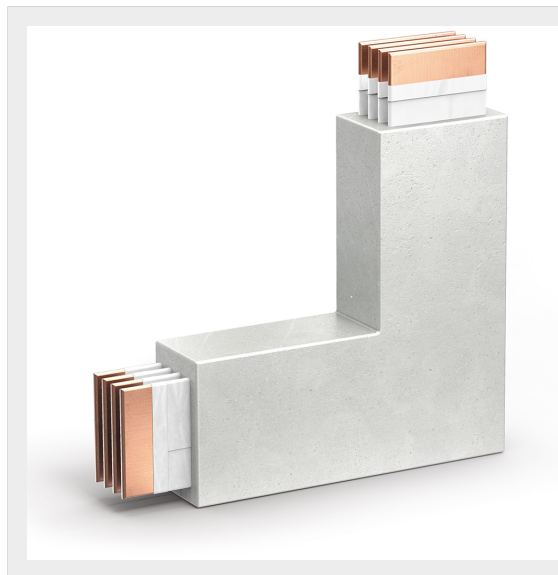


BTICINO > ZUCCHINI busbar > High power busbar > RCP resin busbar IP68 > Vertical elbows




**65280425R**

Vertical elbow RCP in resin IP68 - conductors CU - rated current 1600A

Technical features

Brand	BTicino
Standard reference	IEC 61439-6
Rated voltage	1000Vac
Rated current	1600A
Protection index	IP68
Series	RCP

Documentation

 [Installation manual](#) [Busbar catalogue](#) [Catalogue RCP](#)