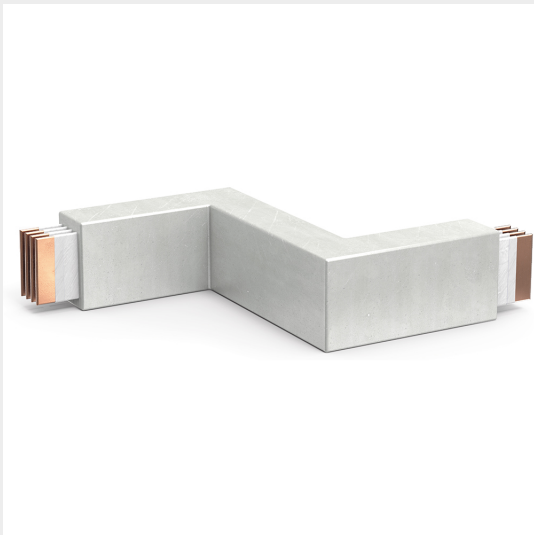




BTICINO > ZUCCHINI busbar > RCP resin busbar IP68 > Double horizontal elbows

65280345R

Double horizontal elbow RCP in resin IP68 - conductors CU - rated current 1600A




Technical features

Protection index	IP68
Standard reference	IEC 61439-6
Rated voltage	1000V
Rated current	1600A
Series	RCP

Documentation

 [Busbar catalogue](#)

 [Catalogue RCP](#)