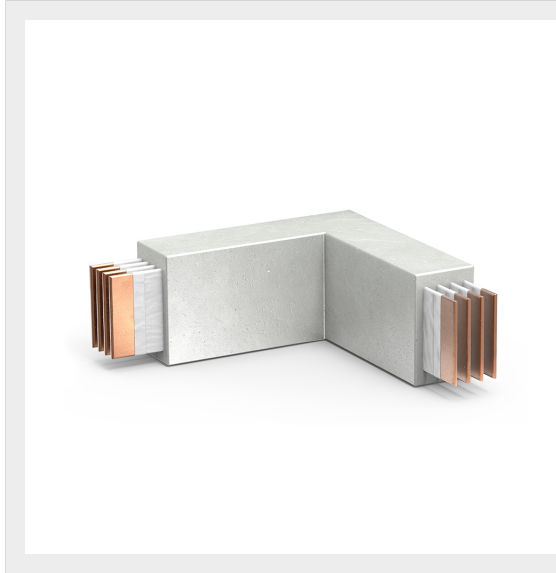




BTICINO > ZUCCHINI busbar > RCP resin busbar IP68 > Horizontal elbows






65280325R

Horizontal elbow RCP in resin IP68 - conductors CU - rated current 1600A

Technical features

Protection index	IP68
Standard reference	IEC 61439-6
Rated voltage	1000V
Rated current	1600A
Series	RCP

Documentation

-  [Instructions Sheet](#)
-  [Busbar catalogue](#)
-  [Catalogue RCP](#)