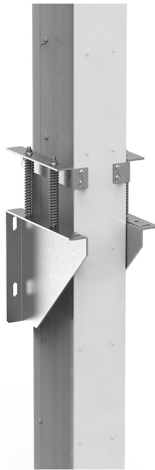


BTICINO > ZUCCHINI busbar > High power busbar > SCP Supercompact > Brackets



**65213711**

XCP-HP - installation bracket for straight elements in vertical (Al).
Type A (bracket + spring) - In= 630-800-1000A (Al) and
800-1000-1250A (Cu)

Technical features

Brand	BTicino
Standard reference	CEI EN 61439-6
Rated voltage	1000V
Rated current	630-800-1000-1250A
Protection index	IP55
Series	Zucchini XCP-HP

Documentation

 [Instruction Sheet](#) [Busbar catalogue](#) [Catalogue](#)