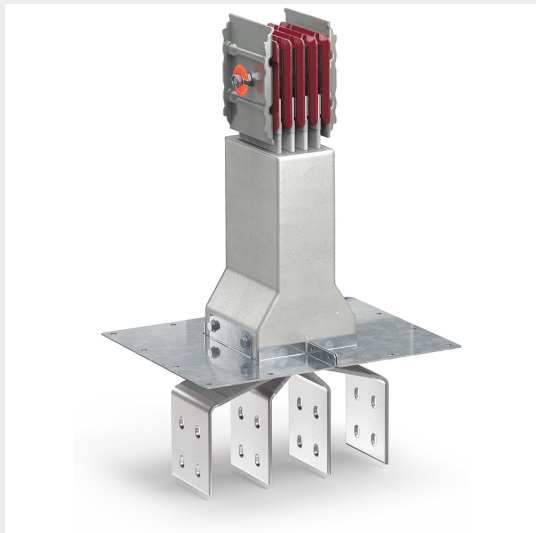


BTICINO &gt; ZUCCHINI busbar &gt; High power busbar &gt; RCP resin busbar IP68 &gt; Connection interfaces


**60391018R**

Connection interface left RCP in resin - conductors AL - rated current 5000A

## Technical features

## Documentation

Brand	BTicino
Standard reference	IEC 61439-6
Rated voltage	1000V
Rated current	5000A
Protection index	IP55
Series	RCP

 [Installation manual](#) [Busbar catalogue](#) [Catalogue RCP](#)