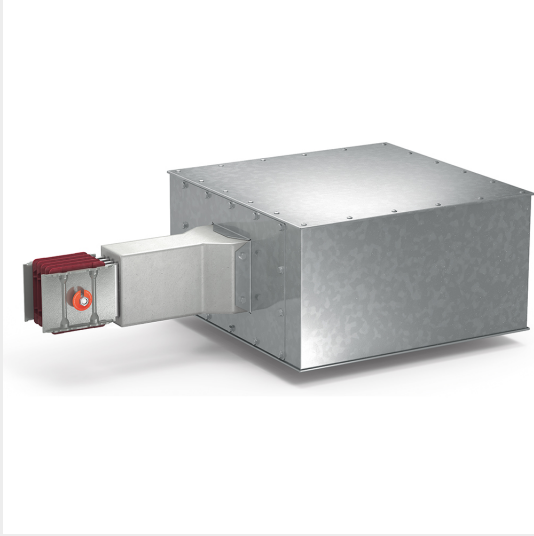




BTICINO > ZUCCHINI busbar > RCP resin busbar IP68 > Feed elements

## 60281116R


Power supply left RCP in resin - conductors AL - rated current 1600A




### Technical features

Protection index	IP55
Standard reference	IEC 61439-6
Rated voltage	1000V
Rated current	1600A
Series	RCP

### Documentation

 [Busbar catalogue](#)

 [Catalogue RCP](#)