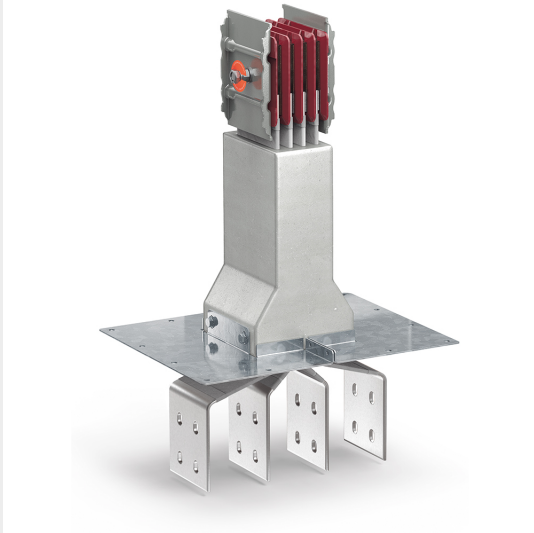




BTICINO > ZUCCHINI busbar > RCP resin busbar IP68 > Connection interfaces






60281014R

Connection interface left RCP in resin - conductors AL - rated current 1250A

Technical features

Protection index	IP55
Standard reference	IEC 61439-6
Rated voltage	1000V
Rated current	1250A
Series	RCP

Documentation

-  [Instructions Sheet](#)
-  [Busbar catalogue](#)
-  [Catalogue RCP](#)