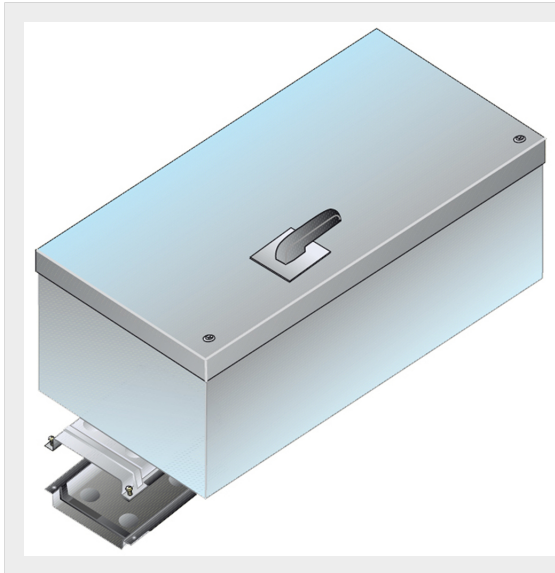


BTICINO > ZUCCHINI busbar > Medium power busbar > MR Medium Rating > Junctions



**55401805**

Tap-off box for MR Cu (1000A) with disconnecter switch AC23 and fuse carrier base NH4 - In=800A - IP55

Technical features

Brand	BTicino
Standard reference	CEI EN 61439-6
Rated current	800A
Protection index	IP55
Series	MR

Documentation

 [Instruction Sheet](#) [Busbar catalogue](#)