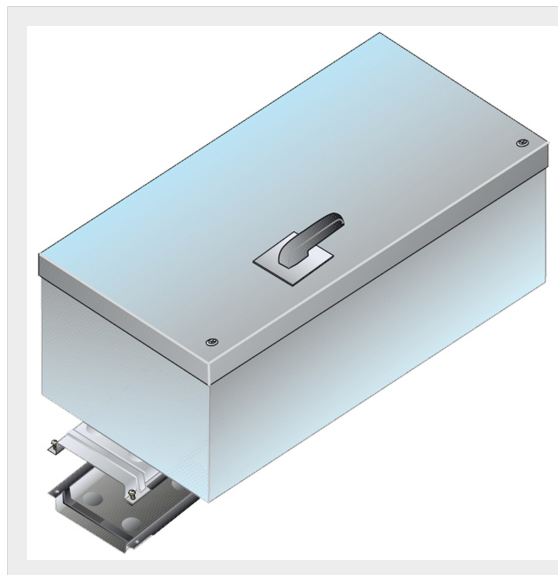




BTICINO > ZUCCHINI busbar > MR Medium Rating > Junctions




55401803


Tap-off box for MR Cu (1000A) with disconnecter switch AC23 and fuse carrier base NH3 - In=630A - IP55

Technical features

Protection index	IP55
Standard reference	CEI EN 61439-6
Rated current	630A
Series	MR

Documentation

 [Instructions Sheet](#)

 [Busbar catalogue](#)