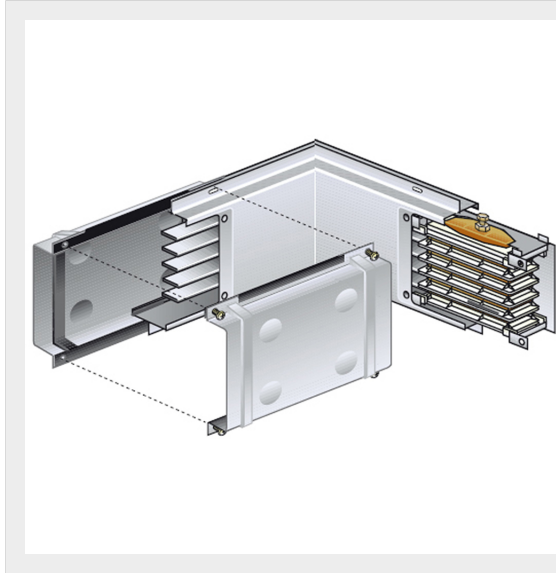




BTICINO > ZUCCHINI busbar > MR Medium Rating > Horizontal elbows copper



55400313

Horizontal elbow (left) in Cu for MR315 - In=315A - IP55 - length 300+300mm

Technical features


Protection index	IP55
Length	0.3+0.3m
Standard reference	CEI EN 61439-6
Rated voltage	1000V
Rated current	315A
Series	MR

Documentation

[Instructions Sheet](#)


[Busbar catalogue](#)

Related products




55400253

Straight element MR315 Cu with 5 outlets on one side only - In=315A - IP52 - length 3m




55400103

Straight element MR315 Cu with 3+3 outlets for side - In=315A - IP52 - length 3m




55400123

Straight element MR315 Cu without outlets - In=315A - IP52 - length 1-1.5m




55400153

Straight element MR315 Cu with 2+2 outlets for side - In=315A - IP52 - length 1.5-3m




55400113

Straight element MR315 Cu without outlets - In=315A - IP52 - length 0.6-1m



55400143

Straight element MR315 Cu with 1+1 outlets for side - In=315A - IP52 - length 1-1.5m



55400243

Straight element MR315 Cu without outlets - In=315A - IP52 - length 3m