



BTICINO > ZUCCHINI busbar > Medium power busbar > MR Medium Rating > Copper straight elements

55400147Straight element MR1000 Cu with 1+1 outlets for side - In=1000A
- IP52 - length 1-1.5m

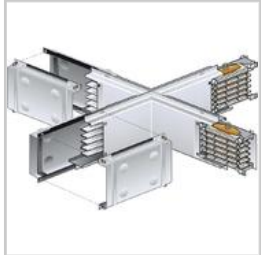
Technical features

Brand	BTicino
Standard reference	CEI EN 61439-6
Rated voltage	1000V
Rated current	1000A
Protection index	IP55
Length	11.5m
N° of compartments	1+1
Series	MR

Documentation

 [Installation manual](#) [Busbar catalogue](#)

Related products



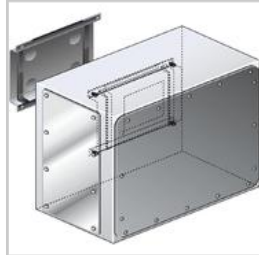
55403007

Cross element for
busbar MR Cu -
In=1000A - IP55



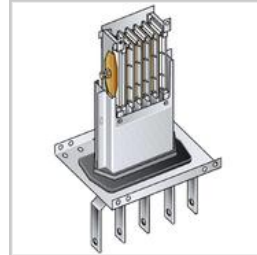
55401007

Right feed unit from
cabinet to transformers
for busbar in Cu
MR1000 - In=1000A -
IP55



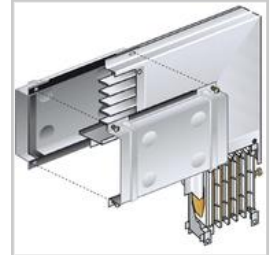
55401207

Intermediate feed unit
for busbar Cu MR1000 -
In=1000A - IP55



55401017

Left feed unit from
cabinet to transformers
for busbar in Cu
MR1000 - In=1000A -
IP55



55400417

Vertical elbow (left) in
Cu for MR1000 -
In=1000A - IP55



55400407

Vertical elbow (right) in
Cu for MR1000 -
In=1000A - IP55



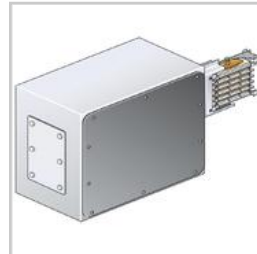
55400317

Horizontal elbow (left) in
Cu for MR1000 -
In=1000A - IP55 - length
300+300mm



55400307

Horizontal elbow (right)
in Cu for MR1000 -
In=1000A - IP55 - length
300+300mm



55401137

Left feed unit (BIG) for
busbar in Cu MR1000 -
In=1000A - IP55



55401127

Right feed unit (BIG) for
busbar in Cu MR1000 -
In=1000A - IP55