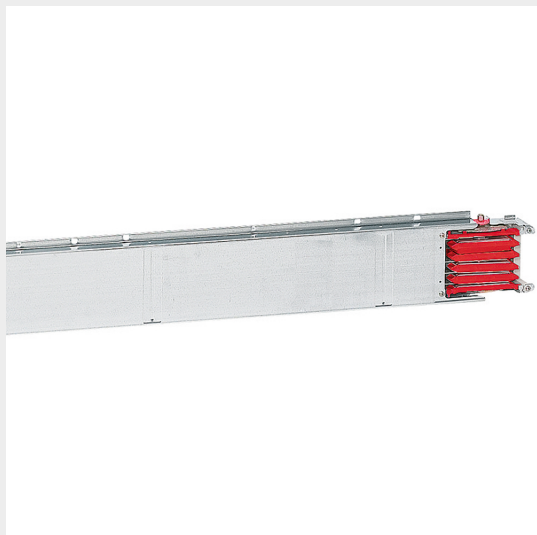




BTICINO > ZUCCHINI busbar > MR Medium Rating > Copper straight elements

55400117


Straight element MR1000 Cu without outlets - $I_n=1000A$ - IP52 - length 0.6-1m




Technical features

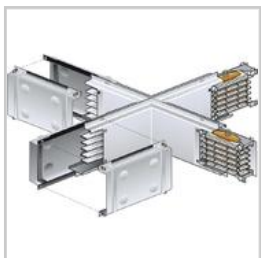
Protection index	IP55
Length	0.61m
Standard reference	CEI EN 61439-6
Rated voltage	1000V
Rated current	1000A
Series	MR

Documentation

 [Instructions Sheet](#)

 [Busbar catalogue](#)

Related products



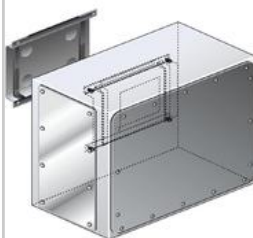
55403007

Cross element for busbar MR Cu - In=1000A - IP55



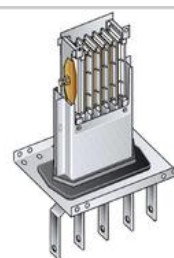
55401007

Right feed unit from cabinet to transformers for busbar in Cu MR1000 - In=1000A - IP55



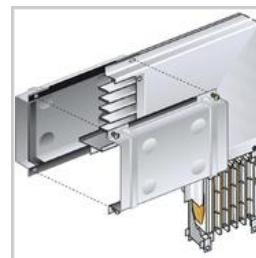
55401207

Intermediate feed unit for busbar Cu MR1000 - In=1000A - IP55



55401017

Left feed unit from cabinet to transformers for busbar in Cu MR1000 - In=1000A - IP55



55400417

Vertical elbow (left) in Cu for MR1000 - In=1000A - IP55



55400407

Vertical elbow (right) in Cu for MR1000 - In=1000A - IP55



55400317

Horizontal elbow (left) in Cu for MR1000 - In=1000A - IP55 - length 300+300mm



55400307

Horizontal elbow (right) in Cu for MR1000 - In=1000A - IP55 - length 300+300mm



55401137

Left feed unit (BIG) for busbar in Cu MR1000 - In=1000A - IP55



55401127

Right feed unit (BIG) for busbar in Cu MR1000 - In=1000A - IP55