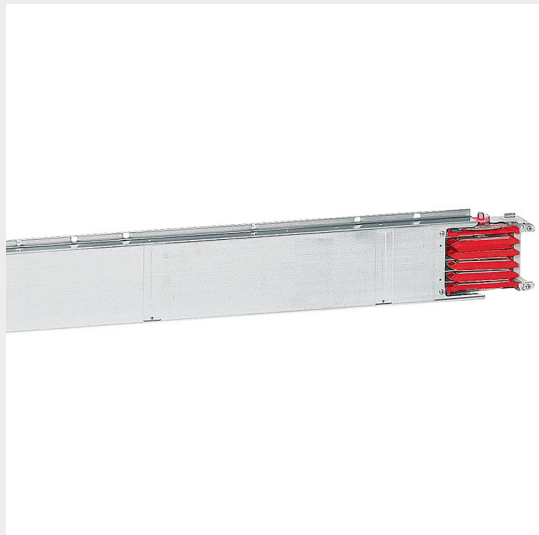


BTICINO > ZUCCHINI busbar > Medium power busbar > MR Medium Rating > Copper straight elements

55400115



Straight element MR630 Cu without outlets - In=630A - IP52 - length 0.6-1m



Technical features

Brand	BTicino
Standard reference	CEI EN 61439-6
Rated voltage	1000V
Rated current	630A
Protection index	IP55
Length	0.61m
Series	MR

Documentation

 [Installation manual](#) [Busbar catalogue](#)

Related products



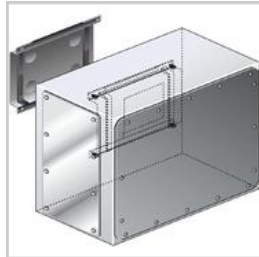
55403005

Cross element for
busbar MR Cu -
In=630A - IP55



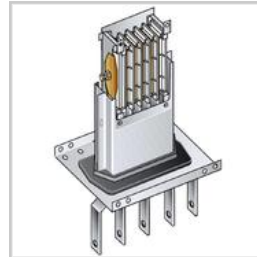
55401005

Right feed unit from
cabinet to transformers
for busbar in Cu MR630
- In=630A - IP55



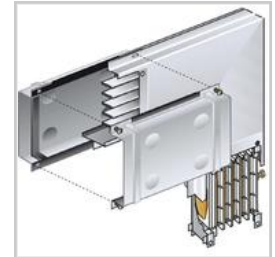
55401205

Intermediate feed unit
for busbar Cu MR630 -
In=630A - IP55



55401015

Left feed unit from
cabinet to transformers
for busbar in Cu MR630
- In=630A - IP55



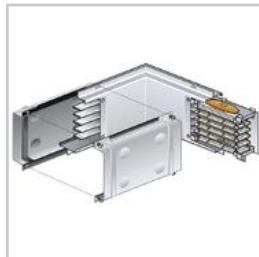
55400415

Vertical elbow (left) in
Cu for MR630 - In=630A
- IP55



55400405

Vertical elbow (right) in
Cu for MR630 - In=630A
- IP55



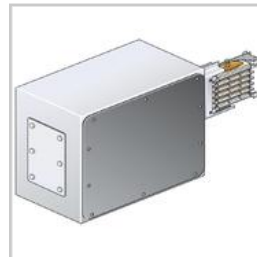
55400315

Horizontal elbow (left) in
Cu for MR630 - In=630A
- IP55 - length
300+300mm



55400305

Horizontal elbow (right)
in Cu for MR630 -
In=630A - IP55 - length
300+300mm



55401135

Left feed unit (BIG) for
busbar in Cu MR630 -
In=630A - IP55



55401125

Right feed unit (BIG) for
busbar in Cu MR630 -
In=630A - IP55