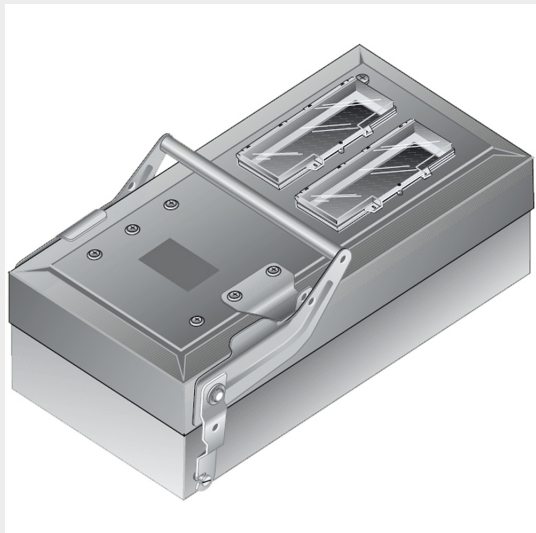


BTICINO > ZUCCHINI busbar > Medium power busbar > MR Medium Rating > Junctions




**55055071**

Tap-off box for MR for Mcb with transparent door - 11+11 modules DIN35 - In=400A - IP55

Technical features

Documentation

Brand	BTicino
Standard reference	CEI EN 61439-6
Rated voltage	1000Vac
Rated current	400A
N° of modules	11+11
Protection index	IP55
Series	MR

 [Instruction sheet](#) [Instruction Sheet](#) [Busbar catalogue](#)