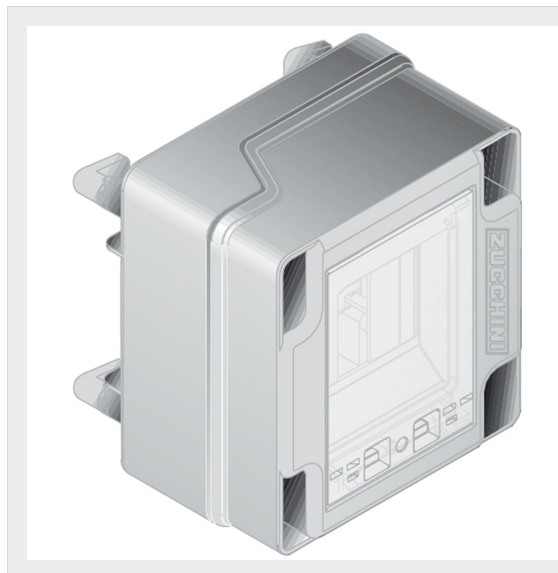


BTICINO &gt; ZUCCHINI busbar &gt; Low power busbar &gt; MS Mini Sbarra &gt; Junctions





51515072

Empty tap-off box short for MS with transparent door e DIN35 rail  
4 modules - In=32A - IP55

## Technical features

Brand	BTicino
Standard reference	CEI EN 61439-6
Rated voltage	400V
Rated current	32A
N° of modules	4
Protection index	IP40/55
Series	MS

## Documentation

 [Instruction Sheet](#) [Busbar catalogue](#)