

BTICINO &gt; ZUCCHINI busbar &gt; Medium power busbar &gt; MR Medium Rating &gt; Aluminium straight elements



**50400278-1600**

Data Center straight elements (IP40). Aluminium conductors and windows on both sides (2+2, step 800mm) - In=500A - IP40 - length 1,6m

## Technical features

Brand	BTicino
Rated current	500A
Protection index	IP40
Length	1600 mm

## Documentation

 [Instruction Sheet](#) [Busbar catalogue](#)

## Related products



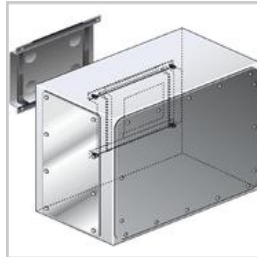
**50401008**

Right feed unit from cabinet to transformers for busbar in AI MR500 - In=500A - IP55



**50401128**

Right feed unit (BIG) for busbar in AI MR500 - In=500A - IP55



**50401208**

Intermediate feed unit for busbar AI MR500 - In=500A - IP55



**50400308**

Horizontal elbow (right) in AI for MR500 - In=500A - IP55 - length 300+300mm



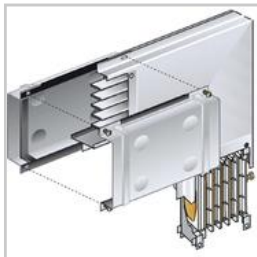
**50400318**

Horizontal elbow (left) in AI for MR500 - In=500A - IP55 - length 300+300mm



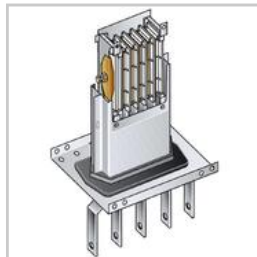
**50400408**

Vertical elbow (right) in AI for MR500 - In=500A - IP55



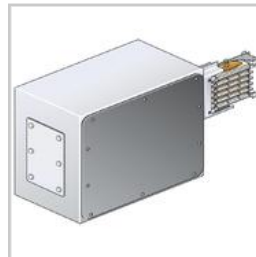
**50400418**

Vertical elbow (left) in AI for MR500 - In=500A - IP55



**50401018**

Left feed unit from cabinet to transformers for busbar in AI MR500 - In=500A - IP55



**50401138**

Left feed unit (BIG) for busbar in AI MR500 - In=500A - IP55