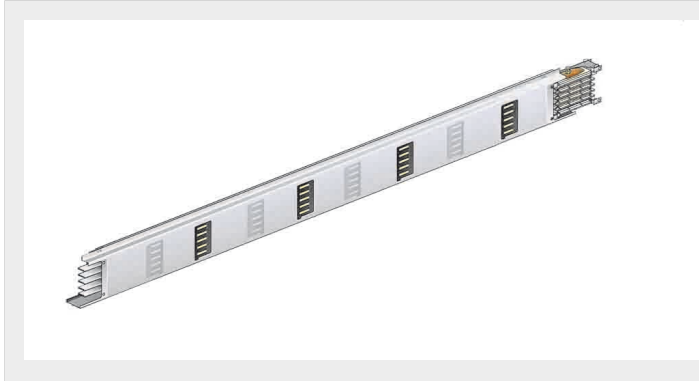


BTICINO > ZUCCHINI busbar > Medium power busbar > MR Medium Rating > Aluminium straight elements



**50400262-2400**

Data Center straight elements (IP40). Aluminium conductors and windows on both sides (4+4, step 600mm) - In=250A - IP40 - length 2,4m

Technical features

Brand	BTicino
Rated current	250A
Protection index	IP40
Length	2400 mm

Documentation

 [Instruction Sheet](#) [Busbar catalogue](#)

Related products



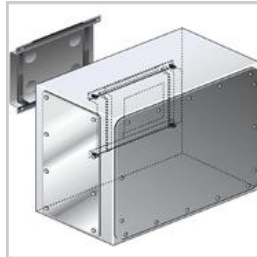
50401002

Right feed unit from cabinet to transformers for busbar in AI MR250 - In=250A - IP55



50401122

Right feed unit (BIG) for busbar in AI MR250 - In=250A - IP55



50401202

Intermediate feed unit for busbar AI MR250 - In=250A - IP55



50400302

Horizontal elbow (right) in AI for MR250 - In=250A - IP55 - length 300+300mm



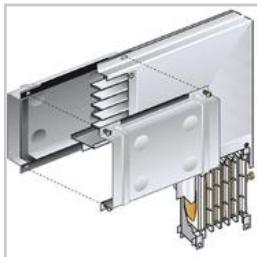
50400312

Horizontal elbow (left) in AI for MR250 - In=250A - IP55 - length 300+300mm



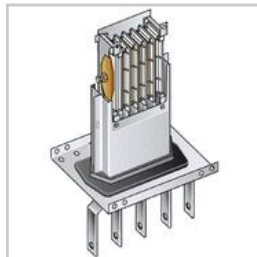
50400402

Vertical elbow (right) in AI for MR250 - In=250A - IP55



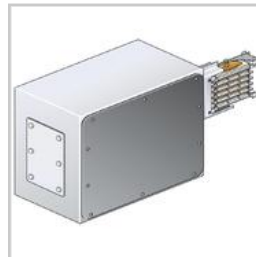
50400412

Vertical elbow (left) in AI for MR250 - In=250A - IP55



50401012

Left feed unit from cabinet to transformers for busbar in AI MR250 - In=250A - IP55



50401132

Left feed unit (BIG) for busbar in AI MR250 - In=250A - IP55