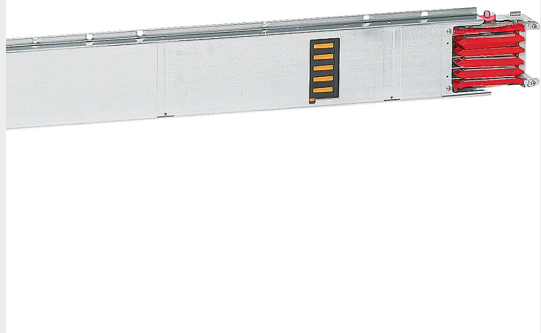




BTICINO > ZUCCHINI busbar > MR Medium Rating > Aluminium straight elements

50400252


Straight element MR250 Al with 5 outlets on one side only -
In=250A - IP52 - length 3m




Technical features

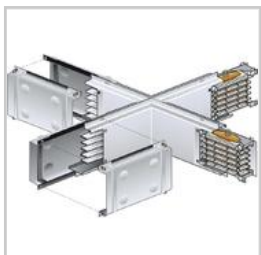
Protection index	IP55
Length	3m
Standard reference	CEI EN 61439-6
N° of compartments	5
Rated voltage	1000V
Rated current	250A
Series	MR

Documentation

 [Instructions Sheet](#)

 [Busbar catalogue](#)

Related products



50403002

Cross element for busbar MR AI - In=250A - IP55



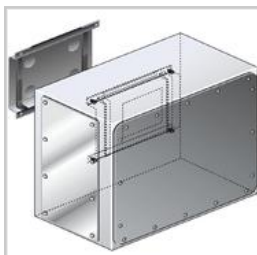
50401002

Right feed unit from cabinet to transformers for busbar in AI MR250 - In=250A - IP55



50401122

Right feed unit (BIG) for busbar in AI MR250 - In=250A - IP55



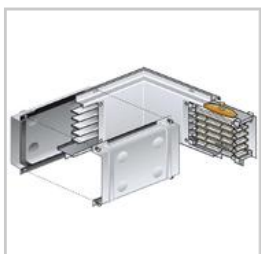
50401202

Intermediate feed unit for busbar AI MR250 - In=250A - IP55



50400302

Horizontal elbow (right) in AI for MR250 - In=250A - IP55 - length 300+300mm



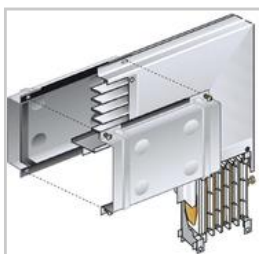
50400312

Horizontal elbow (left) in AI for MR250 - In=250A - IP55 - length 300+300mm



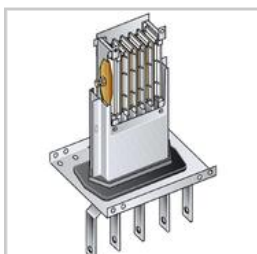
50400402

Vertical elbow (right) in AI for MR250 - In=250A - IP55



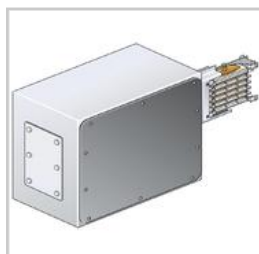
50400412

Vertical elbow (left) in AI for MR250 - In=250A - IP55



50401012

Left feed unit from cabinet to transformers for busbar in AI MR250 - In=250A - IP55



50401132

Left feed unit (BIG) for busbar in AI MR250 - In=250A - IP55