

BTICINO &gt; ZUCCHINI busbar &gt; Medium power busbar &gt; MR Medium Rating &gt; Aluminium straight elements

50400152




Straight element MR250 Al with 2+2 outlets for side - In=250A - IP52 - length 1.5-3m



## Technical features

Brand	BTicino
Standard reference	CEI EN 61439-6
Rated voltage	1000Vac
Rated current	250A
Protection index	IP55
Length	1.53m
N° of compartments	2+2
Series	MR

## Documentation

-  [Installation manual](#)
-  [Instruction Sheet](#)
-  [Busbar catalogue](#)

## Related products



**50403002**

Cross element for busbar MR AI - In=250A - IP55



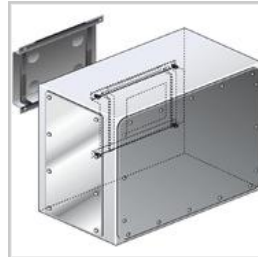
**50401002**

Right feed unit from cabinet to transformers for busbar in AI MR250 - In=250A - IP55



**50401122**

Right feed unit (BIG) for busbar in AI MR250 - In=250A - IP55



**50401202**

Intermediate feed unit for busbar AI MR250 - In=250A - IP55



**50400302**

Horizontal elbow (right) in AI for MR250 - In=250A - IP55 - length 300+300mm



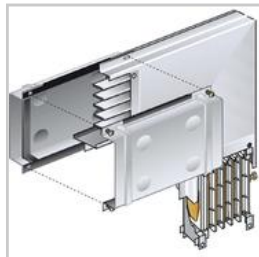
**50400312**

Horizontal elbow (left) in AI for MR250 - In=250A - IP55 - length 300+300mm



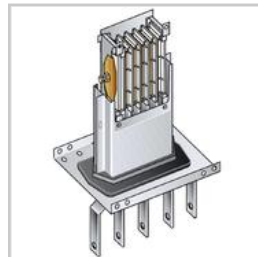
**50400402**

Vertical elbow (right) in AI for MR250 - In=250A - IP55



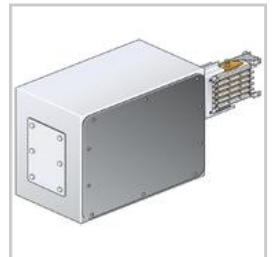
**50400412**

Vertical elbow (left) in AI for MR250 - In=250A - IP55



**50401012**

Left feed unit from cabinet to transformers for busbar in AI MR250 - In=250A - IP55



**50401132**

Left feed unit (BIG) for busbar in AI MR250 - In=250A - IP55