

BTICINO &gt; ZUCCHINI busbar &gt; Medium power busbar &gt; MR Medium Rating &gt; Aluminium straight elements

50400123



Straight element MR315 Al without outlets - In=315A - IP52 - length 1-1.5m



## Technical features

Brand	BTicino
Standard reference	CEI EN 61439-6
Rated voltage	1000V
Rated current	315A
Protection index	IP55
Length	11.5m
Series	MR

## Documentation

 [Installation manual](#) [Busbar catalogue](#)

## Related products



**50403003**

Cross element for busbar MR AI - In=315A - IP55



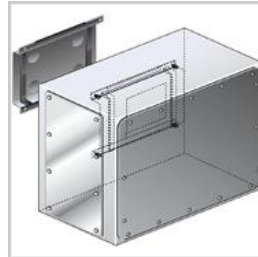
**50401003**

Right feed unit from cabinet to transformers for busbar in AI MR315 - In=315A - IP55



**50401123**

Right feed unit (BIG) for busbar in AI MR315 - In=315A - IP55



**50401203**

Intermediate feed unit for busbar AI MR315 - In=315A - IP55



**50400303**

Horizontal elbow (right) in AI for MR315 - In=315A - IP55 - length 300+300mm



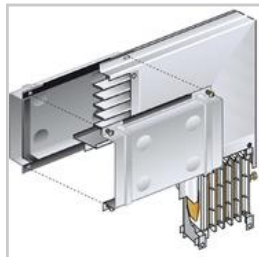
**50400313**

Horizontal elbow (left) in AI for MR315 - In=315A - IP55 - length 300+300mm



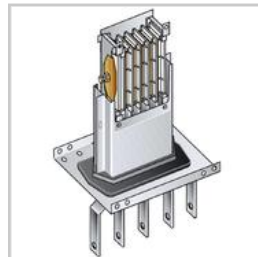
**50400403**

Vertical elbow (right) in AI for MR315 - In=315A - IP55



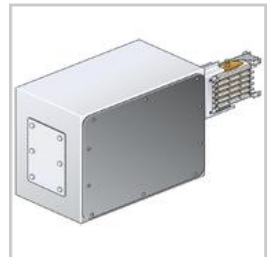
**50400413**

Vertical elbow (left) in AI for MR315 - In=315A - IP55



**50401013**

Left feed unit from cabinet to transformers for busbar in AI MR315 - In=315A - IP55



**50401133**

Left feed unit (BIG) for busbar in AI MR315 - In=315A - IP55