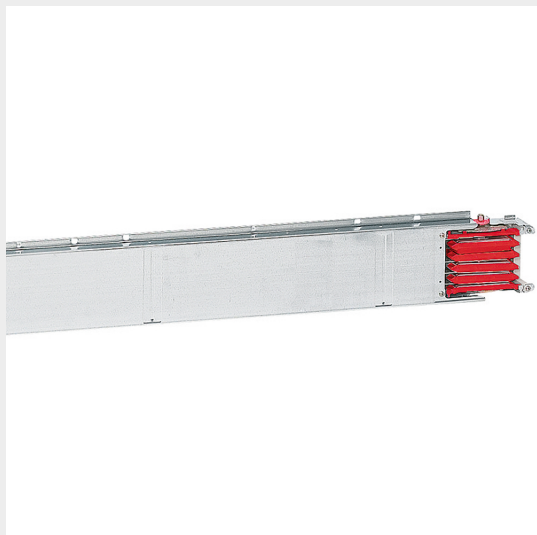


BTICINO > ZUCCHINI busbar > Medium power busbar > MR Medium Rating > Aluminium straight elements

50400112



Straight element MR250 Al without outlets - In=250A - IP52 - length 0.6-1m



Technical features

Brand	BTicino
Standard reference	CEI EN 61439-6
Rated voltage	1000V
Rated current	250A
Protection index	IP55
Length	0.61m
Series	MR

Documentation

 [Installation manual](#) [Busbar catalogue](#)

Related products



50403002

Cross element for busbar MR AI - In=250A - IP55



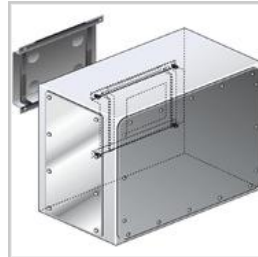
50401002

Right feed unit from cabinet to transformers for busbar in AI MR250 - In=250A - IP55



50401122

Right feed unit (BIG) for busbar in AI MR250 - In=250A - IP55



50401202

Intermediate feed unit for busbar AI MR250 - In=250A - IP55



50400302

Horizontal elbow (right) in AI for MR250 - In=250A - IP55 - length 300+300mm



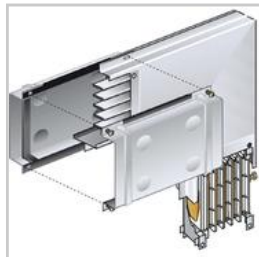
50400312

Horizontal elbow (left) in AI for MR250 - In=250A - IP55 - length 300+300mm



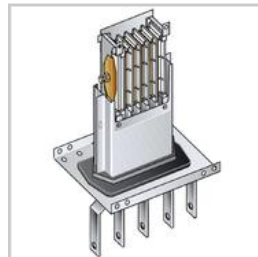
50400402

Vertical elbow (right) in AI for MR250 - In=250A - IP55



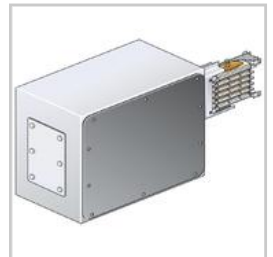
50400412

Vertical elbow (left) in AI for MR250 - In=250A - IP55



50401012

Left feed unit from cabinet to transformers for busbar in AI MR250 - In=250A - IP55



50401132

Left feed unit (BIG) for busbar in AI MR250 - In=250A - IP55