



## M7M02

Multivoltage motor operator for M1 160 and M2 250 - Vn= 24-230Vac/dc. Frontal fitting

### Technical features

Brand	BTicino
Rated voltage	24-230Vac/dc
Height	99mm
Width	80.5mm
Depth	107mm
Series	MEGATIKER

### Documentation

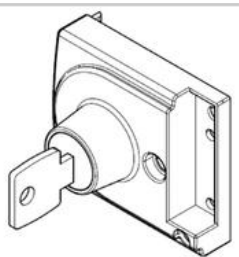
 [Instruction Sheet](#)

## Related products



### M7M04

Keylock type Ronis for multivoltage motor operator item M7M02 (front installation)



### M7M05

Keylock type Profalux for multivoltage motor operator item M7M02 (front installation)



### M7M07

Selector with padlock block for lateral motor operator item M7M01