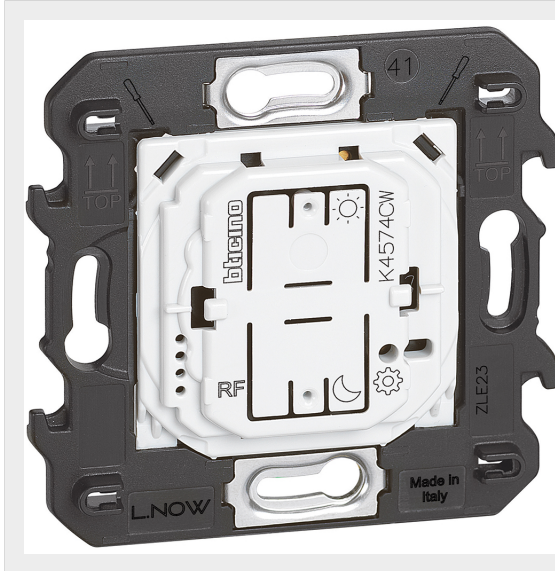


BTICINO > Wiring devices > Living Now > Living Now SMART - Modular version > Wireless controls for scenarios management






K4574CW

Wireless Wake Up / Sleep scenario controls. It is equipped with 2 buttons for activating Wake Up / Sleep scenarios. Scenarios can be customized by the Home + Control app. Surface installation with repositionable stickers (supplied) or onto a flush mounting box. Integrated LED for low battery indication. Powered by battery 3V type CR2032 (supplied) with an autonomy of 8 years - 2 modules





Technical features

| | |
|---------------|---------|
| Brand | BTicino |
| Rated voltage | 3V c.c. |
| N° of modules | 2 |

Documentation

-  [Technical Data Sheet](#)
-  [Instruction Sheet](#)
-  [Living Now english catalogue](#)

Related products

| | | | |
|---|---|--|---|
|  |  |  |  |
| <p>KW41M2</p> <p>Lightable covers "Night&Day" symbol for wireless scenario control item K4574CW. 2 mo...</p> | <p>KG41M2</p> <p>Lightable covers "Night&Day" symbol for wireless scenario control item K4574CW. 2 mo...</p> | <p>KM41M2</p> <p>Lightable covers "Night&Day" symbol for wireless scenario control item K4574CW. 2 modules - sand</p> | <p>K4500C</p> <p>Gateway for remote home control (lights, sockets and shutters) using a smartphone (HOME + CONTROL AP...</p> |

We, Bticino S.p.A Viale Borri 231 21100 Varese (Italy), declare that all items listed in Bticino catalogues, have been manufactured in compliance with the principal elements of safety objectives of European Directive said LVD: 2014/35/EU: 26 February 2014 and, where requested, also in compliance with essential protection requirements of electromagnetic compatibility according to European Directive 2014/30/EU: 26 February 2014, and/or where requested also in compliance with 1995/5/CE: 9 March 1999 "R&TTE" or where requested also in compliance with 2014/53/EU: 16 April 2014 "RED". Bticino S.p.A. products are in compliance with the standard published by the International Electrotechnical Commission (IEC). The compliance can be proved by Certificates issued by organizations recognized by IEC according to the CB-scheme. Our items comply with relevant European Product- Standards and show, whether provided, CE marking, they have been constructed in accordance with good engineering practice in safety matters in force in the Community, they do not endanger the safety of persons, domestic animals or property when properly installed and maintained and used in applications for which they were made.

