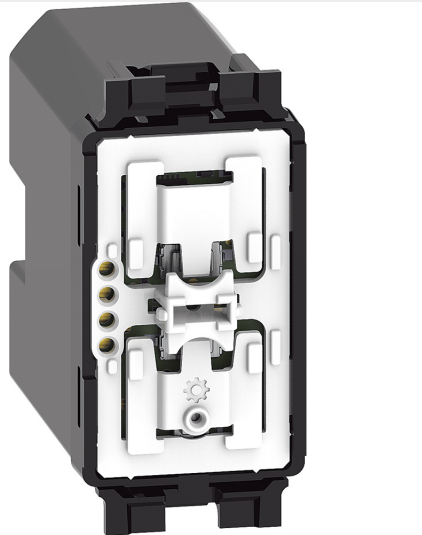


BTICINO > Wiring devices > Living Now > Living Now SMART - Modular version > Wireless controls for light and shutter





K4003CWI

Wireless light switch. It allows the ON / OFF control of one or more connected devices for the lighting control. It can be installed in any flush-mounted box without any wiring. The battery can be replaced without removing it from the supporting frame. Integrated LED for low battery indication. Powered by battery 3V type CR2032 (supplied) with an autonomy of 8 years - 1 module.

Technical features

Brand	BTicino
Rated voltage	3V
N° of modules	1
Series	Living Now

Documentation

-  [Instruction Sheet](#)
-  [Living Now english catalogue](#)