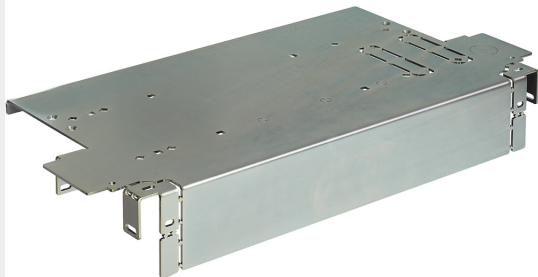


BTICINO > Low voltage energy distribution > MAS4000 - Power Center cabinets > Fixing plates

9533P6F



Fixing plate for Megabreak fixed version Frame 1 width 600mm



Technical features

Width	600mm
Standard reference	CEI EN 61439-1/2
Series	Mas

Documentation

-  [Instructions Sheet](#)
-  [Mas4000 catalogue](#)

Related products



9533C6F1

Front panel with 4 screws for Frame 1 in fixed version width 600mm



9533C6F2

Front panel with 4 screws for Frame 2 in fixed version 600x600mm