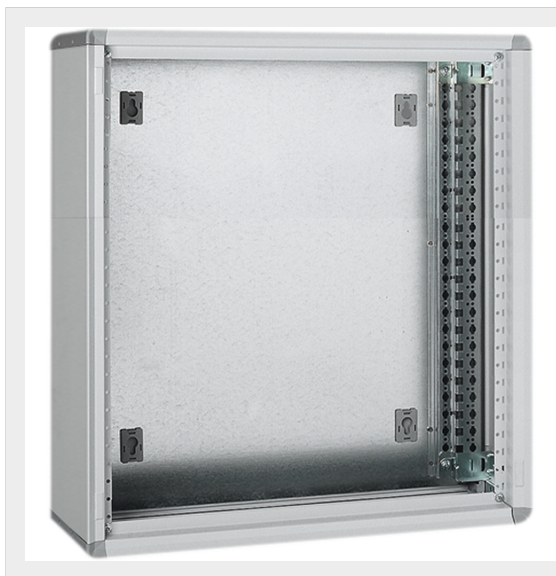


BTICINO > Low voltage energy distribution > Distribution boards and enclosures > MAS400 - Compact distribution boards and cabinets > LDX and MDX wall mounted distribution boards






## 93630Q

LDX400 - wall-mounting distribution board 600x600mm

### Technical features

Brand	BTicino
Standard reference	CEI EN 61439-1/2
Protection index	IP43
Height	600mm
Width	600mm
Depth	175mm
Series	Mas 400

### Documentation

-  [Instruction Sheet](#)
-  [\\_DWG drawing\\_](#)
-  [Mas400 catalogue](#)

## Related products



**93630V**

Glass door for  
distribution board  
LDX400, LDX800 and  
LDX-P 600x600mm



**93630L**

Blank door for  
distribution boards  
LDX400, LDX800 and  
LDX-P 600x600mm



**93630VB**

Curved glass door for  
distribution boards  
LDX400, LDX800 and  
LDX-P 600x600mm