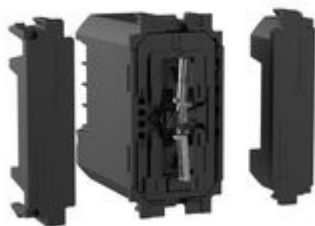


K4412CM2



Dimmer/switch including: - n° 1 item K4411C 1 module
Dimmer/Switch - n° 2 items K4949 half-module blanking modules.
Note: it is necessary to install the two “halfmodule blanking modules” (item K4949) at the sides of the dimmer/switch.
Description of item K4411C: Dimmer/switch. It allows to control lights locally or remotely, with the dimmer functionality that can be activated from APP Home+Control. It has the same installation and usability of a traditional switch and it is compatible with all loads (LED, halogen) with max power 150 W at 230 V (or 75 W at 110 V). It is equipped with a blue LED light used for localization modality or load status modality, configurable by APP. It can be connected to one or more traditional push-button or associated with “wireless light switches”. Caution: Must be connected to the neutral. Power supply 110-230 V a.c. - 1 module.

Technical features

Brand	BTicino
Rated voltage	110-230 Vac
Rated power (W)	150 W at 230 V - or 75 W at 110 V
Modules	2
Series	Living Now

Technical documentation

[? Radio Conformity Declaration](#)
[? Instruction Sheet](#)

We, BTicino S.p.A Viale Borri 231 21100 Varese (Italy), declare that all items listed in BTicino catalogues, have been manufactured in compliance with the principal elements of safety objectives of European Directive said LVD: 2014/35/EU: 26 February 2014 and, where requested, also in compliance with essential protection requirements of electromagnetic compatibility according to European Directive 2014/30/EU: 26 February 2014, and/or where requested also in compliance with 1995/5/CE: 9 March 1999 “R&TTE” or where requested also in compliance with 2014/53/EU: 16 April 2014 “RED”. BTicino S.p.A. products are in compliance with the standard published by the International Electrotechnical Commission (IEC). The compliance can be proved by Certificates issued by organizations recognized by IEC according to the CB-scheme. Our items comply with relevant European Product- Standards and show, whether provided, CE marking, they have been constructed in accordance with good engineering practice in safety matters in force in the Community, they do not endanger the safety of persons, domestic animals or property when properly installed and maintained and used in applications for which they were made.

Complete with


KG01M2

Lightable cover for item
K4001, K4003, K...

KM01M2

Lightable cover for item
K4001, K4003, K...

KW01M2

Lightable cover for item
K4001, K4003, K...