

# User Manual

# TiStereoControl

## Stereo Control (item L4561N)

### configuration Software






**CONTENTS**

<b>1. Hardware and Software requirements</b>	<b>4</b>
<b>2. Installation</b>	<b>4</b>
<b>3. Fundamental concepts</b>	<b>8</b>
3.1 Function selection menus and pushbuttons	
<b>4. Start-up menu</b>	<b>11</b>
4.1. Connecting the Stereo Control (item L4561N) to a PC	
<b>5. Entry of a new remote control</b>	<b>13</b>
<b>6. Associate</b>	<b>15</b>
<b>7. Import commands from project</b>	<b>16</b>
<b>8. "Available controls" test</b>	<b>17</b>
<b>9. "Events" test</b>	<b>18</b>
<b>10. New project</b>	<b>19</b>
<b>11. Open project</b>	<b>19</b>
<b>12. Save project</b>	<b>19</b>
<b>13. Download project</b>	<b>20</b>
<b>14. Updating Firmware</b>	<b>21</b>

## 1. Hardware and Software requirements

 **Warning:** The TiStereoControl program is the fundamental tool for configuring the My Home control devices. The content of this program is covered by exclusive BTicino SpA rights.

### Hardware requirements

- Personal Computer with Pentium processor > 300 MHz
- 64 MB of RAM memory
- SVGA graphic card with resolution 800x600
- CD-ROM reader
- Mouse

### Software requirements

- Windows XP or higher
- Internet Explorer 6.0 or higher

## 2. Installation

To install the TiStereoControl program proceed as described:

1. Insert the CD-ROM in the reader;
2. When the main page is displayed in the web format, select “TiStereoControl Installation”;
3. The installation program will copy the system files needed to run the TiStereoControl program. Confirming the operations when asked, the following windows will be displayed:

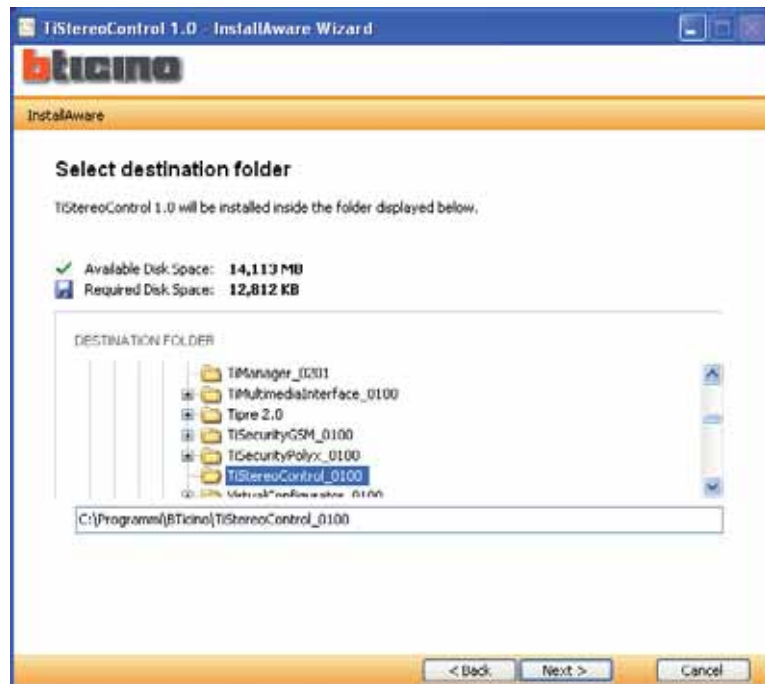


Select the language required from those proposed then press “Next” to continue with the installation. When the application is running you can change the language without repeating the installation.



You will be asked for the folder where TiStereoControl will be installed.

The installation procedure proposes the C:\Programmi\BTicino\TiStereoControl\_0100 folder, but you can select another one from those on the hard disk.

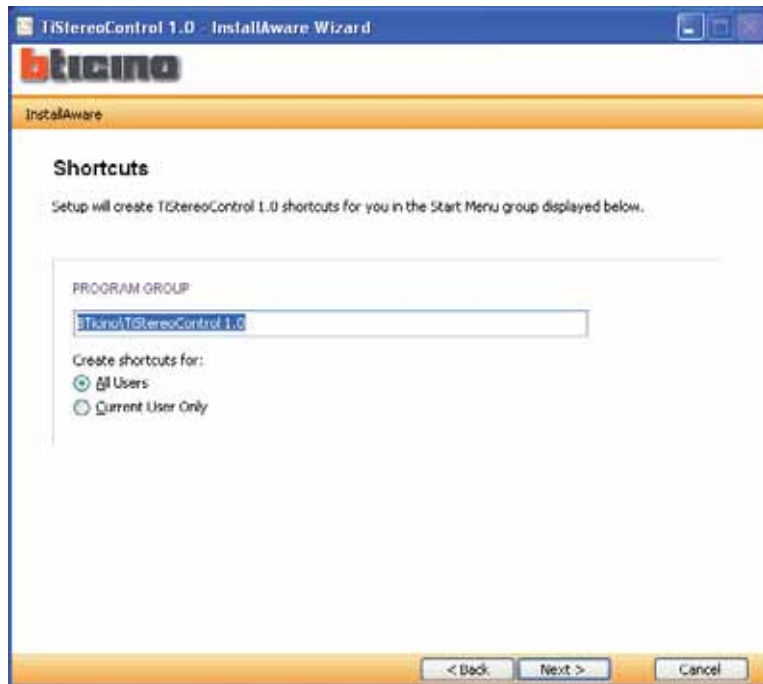


Press "Next" to continue.

Select the language required from those proposed then press "Next" to continue with the installation. When the application is running you can change the language without repeating the installation.

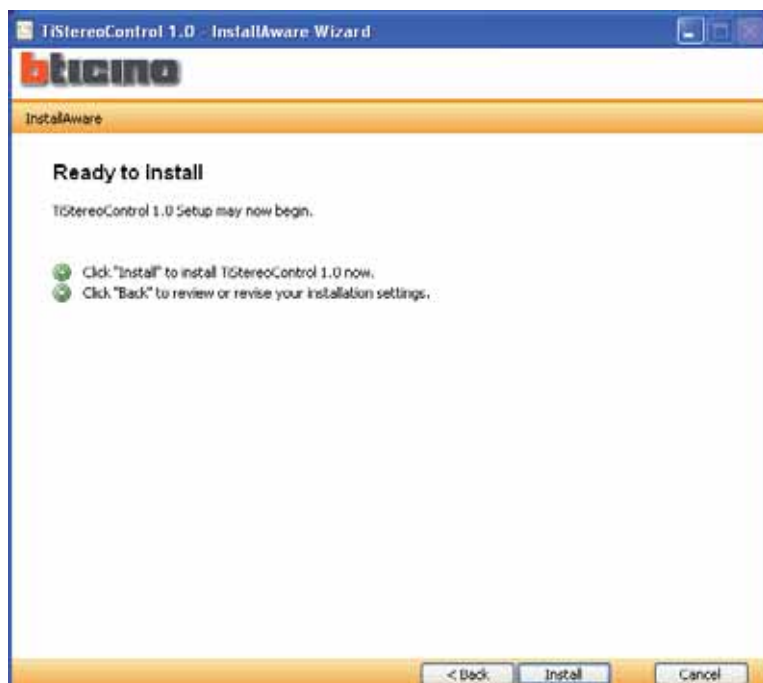



Select the option required.



Press "Next" to initialise the installation.

When the "Install" pushbutton is pressed the program installation starts.

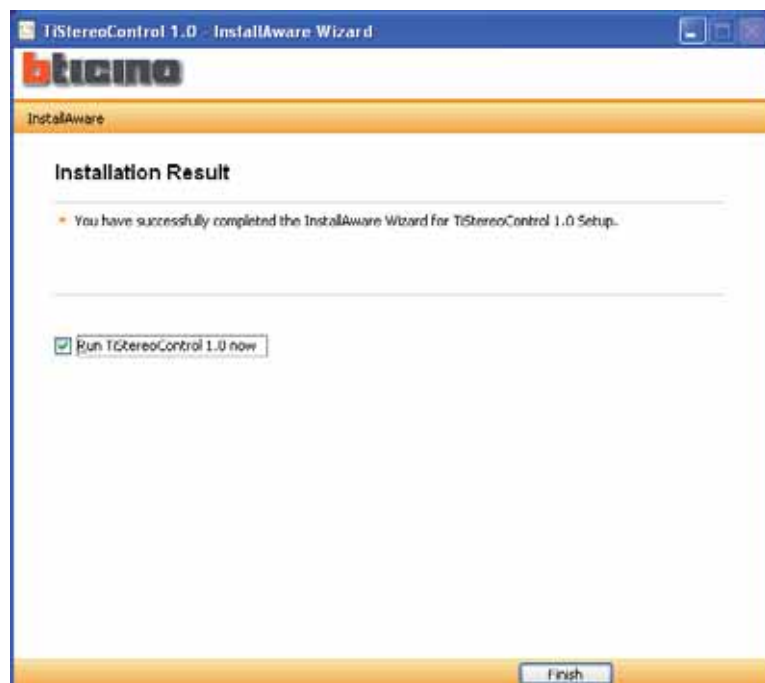


 If USB drivers are needed during the installation select them from the directory in the CD.

During the installation the following window is displayed.



When the installation has finished the following window is displayed. Press the "Finish" pushbutton to quit the installation program.



If necessary install the drivers to manage the connection via USB to item L4561N in the CD.


### 3. Fundamental concepts

The **TiStereoControl** software can configure the Stereo Control (item L4561N) to manage an external stereo source with infrared remote control.

This device saves the commands given by the source remote control to make them available on the amplifiers, special commands and Touch screen.

**TiStereoControl's** scope is to

- make the connection with the device;
- obtain, send and manage the useful commands for compiling the project;
- create, modify and save a project file (.xml) containing the command sequence;
- set the sequences and test them in the project compilation phase;
- send a configuration to the device.

 **Warning:** for TiStereoControl to work correctly the Stereo Control (item L4561N) must be installed in agreement with the indications given in the manual supplied with the device.

#### 3.1 Function selection menus and pushbuttons

All the functions which can be run with TiStereoControl can be selected by means of the icons in the tool bar, or by opening the pull-down menus and selecting the various items.

The tool bar has the following functions:



New, Open, Save and Download a project



New, Cancel and Associate the commands to events



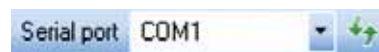
New, Cancel and Rename types and brands of remote controls



New, Reacquire and Cancel the remote controls



New, Open and Export the Data Base file



Indicate the COM port to which the device is connected



Recognise the connected device after running TiStereoControl (Refresh)



Cancel the commands associated with the events



Update the TiStereoControl firmware



The pull-down window has the following functions:

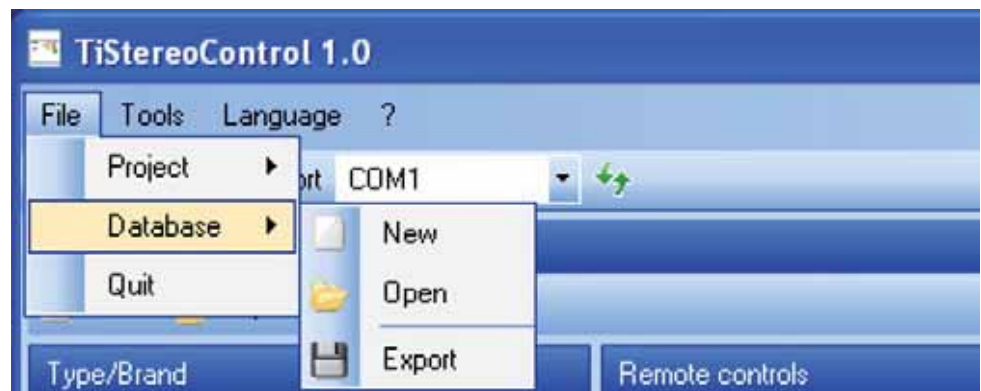


#### “File/Project” menu



- **New project**  
Creates a new project
- **Open project**  
Opens an existing configuration file
- **Save project**  
Saves the current project

#### “File/Database” menu



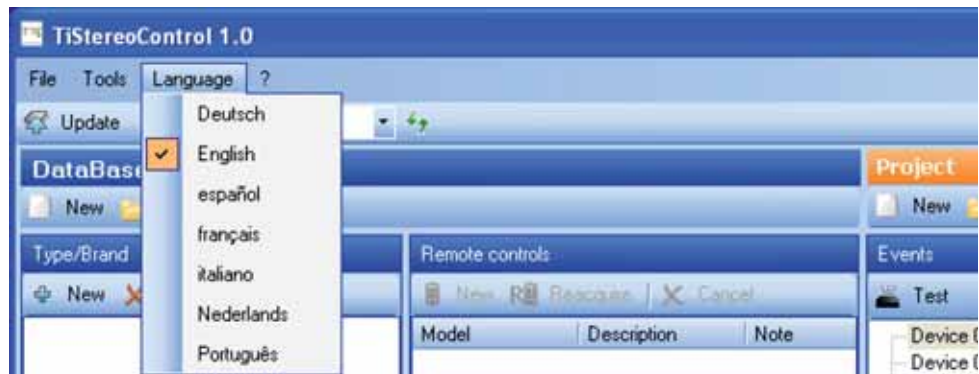
- **New**  
Creates a new data base
- **Open**  
Opens an .MDB file
- **Export**  
Exports an .MDB file

## “Tools” menu



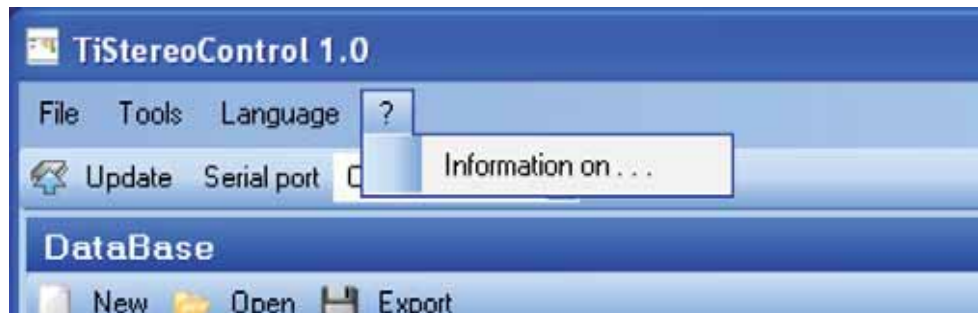
- **Update**  
Updates the item L4561N firmware
- **Download**  
Downloads the created project
- **Test**  
Tests the sequences in the project configuration phase

## “Language” menu



- **Language**  
Selects the application language

## “?” menu

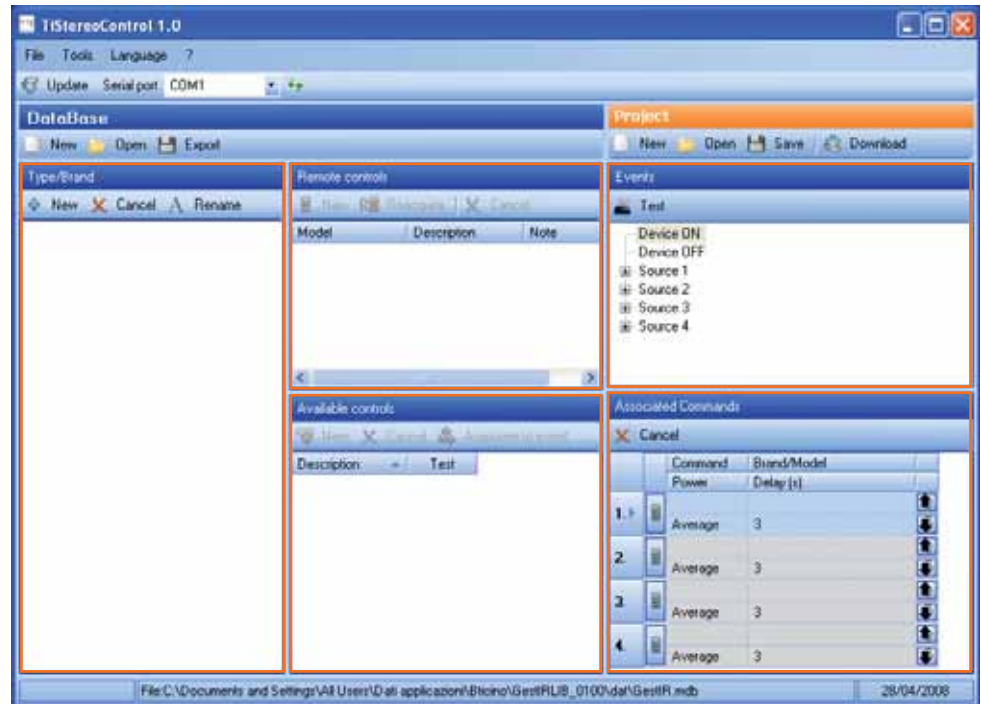


- **Information on ...**  
Displays some information on the TiStereoControl program

## 4. Start-up menu

When the TiStereoControl application is run the main screen is displayed, divided into two areas (**DataBase** and **Project**), where the device programming can be started using the following tool bars:

- **Type/Brand;**
- **Remote controls;**
- **Available controls;**
- **Events;**
- **Associated commands.**



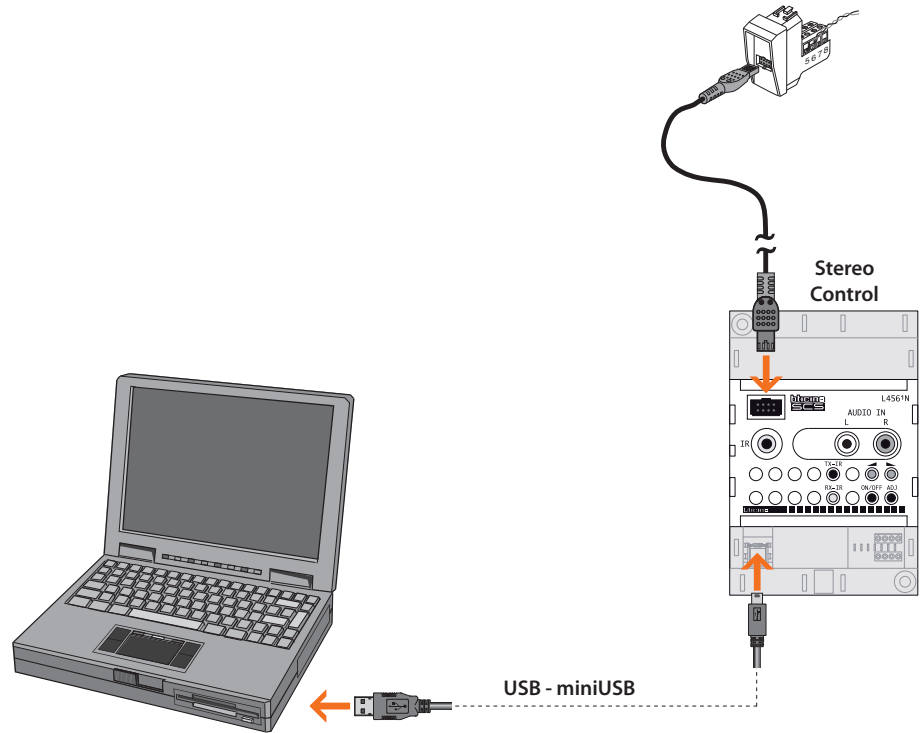
- **Type/Brand (new remote control)**  
This section has the tool bar which can be used to create, cancel or rename a remote control Type/brand.
- **Remote controls**  
This section has the tool bar which can be used to create, cancel or reacquire one or more remote controls.
- **Available controls**  
This section has the tool bar which can be used to create, cancel or associate the commands created to events.
- **Events**  
This section has the tool bar which can be used to test the commands previously associated with the events.
- **Associated commands**  
This section has the tool bar which can be used to cancel the previously created and associated commands.

## 4.1. Connecting the Stereo Control (item L4561N) to a PC

Connect the Stereo Control (item L4561N) to a PC and make sure that the correct port has been selected.

Do this as described below:

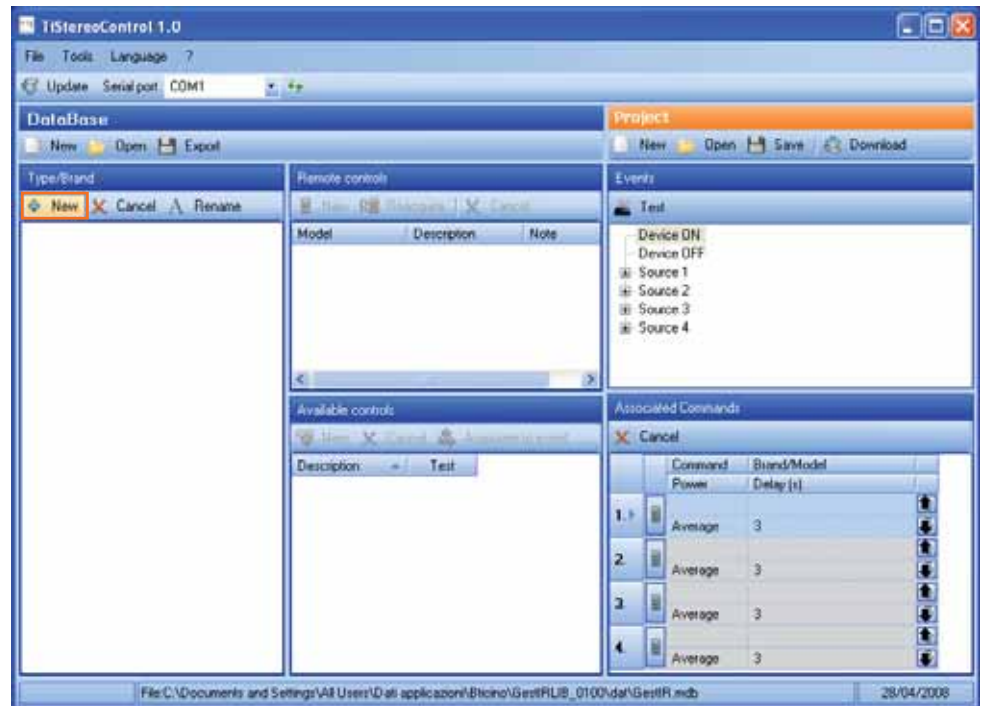
Use a USB cable, connecting between the device miniUSB connector and a PC USB port.



The Stereo Control (item L4561N) must be connected to the BUS and switched on for the communication to take place.

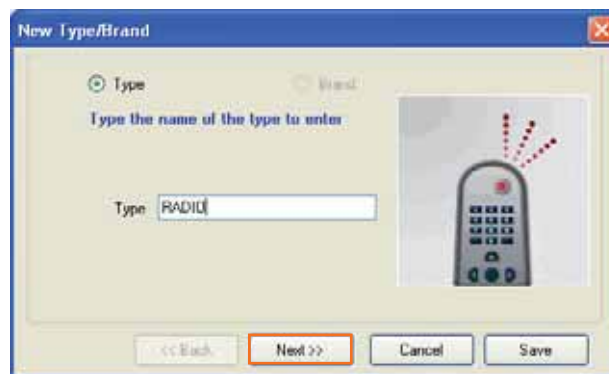
**5. Entry of a new remote control**

Select the "New" function from the "Type/Brand" bar

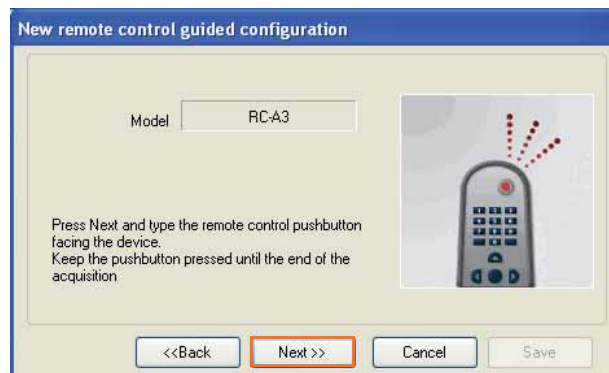


**Warning:** Type, Brand, Model and Description are obligatory fields.

The following window will appear where you can type the type name to enter. Then, on clicking on the "Next" pushbutton, the windows will appear where you enter the brand, model, description and if necessary a note to attribute to the remote control to be acquired.

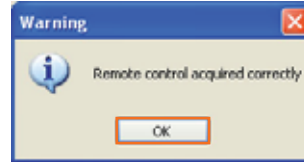


When the fields mentioned above have been entered, click on the "Next" pushbutton and point the remote control towards the device to complete the acquisition process of the remote control required.

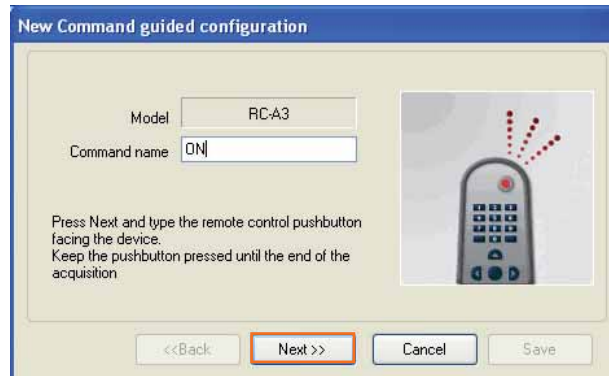



**Warning:** Keep the remote control pushbutton pressed until the end of the acquisition.

When the process has been completed the message will appear confirming that the remote control has been acquired; if there is an error check that the device is connected to the PC and that the serial port (COM) is correct.



After acquiring the remote control, on clicking on the "OK" pushbutton the following window will appear, where you can save the commands associated with the remote control. Click on "Next" and press the remote control pushbutton pointing it towards the device to complete the command acquisition.

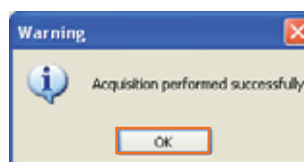


 **Warning:** Keep the pushbutton pressed until the end of the acquisition

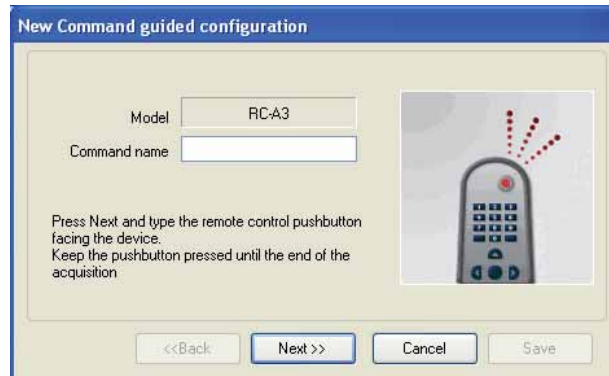
At the end of the advancing process the following message appears, confirming that the first acquisition has been performed correctly. Click on "OK" and press the key again for the second acquisition.




At the end of the process a confirmation message indicates that the control has been acquired. Click on "OK".



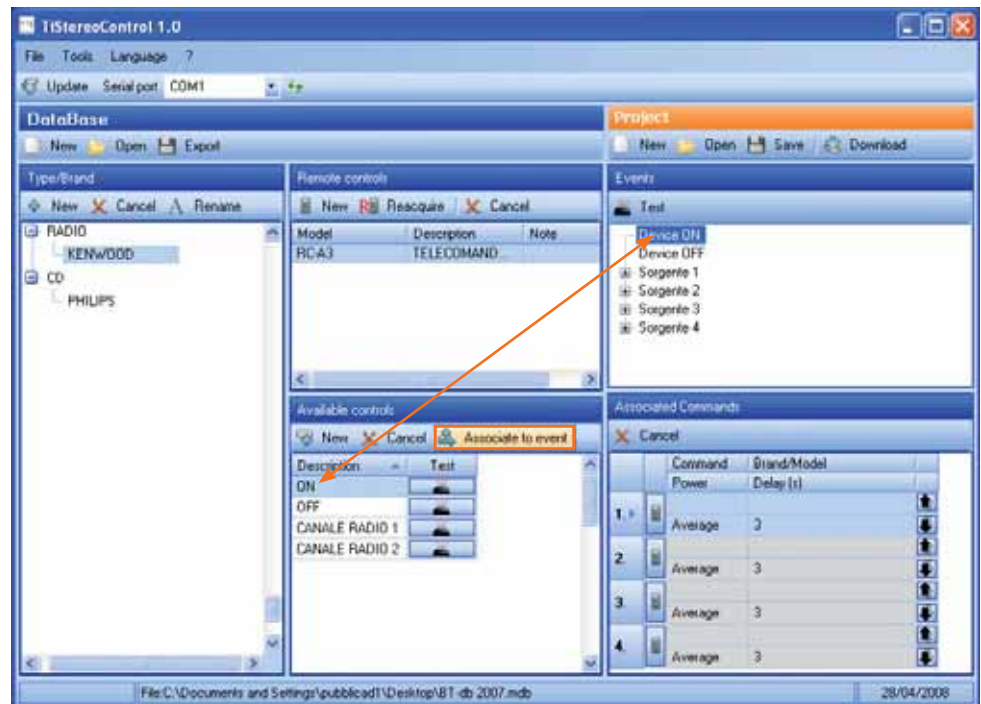
The following screen appears where you can continue acquiring commands by clicking on "Next". New commands can be created from the "Available controls" bar later.



 **Warning:** If you want to end the acquisition of commands click on "Cancel".

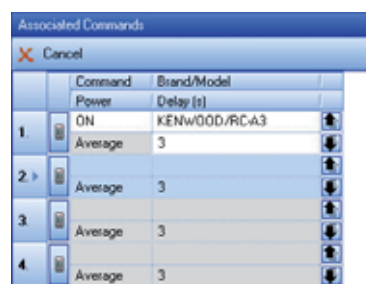
## 6. Associate

The "Events" window includes a series of events to which several commands can be associated selected from the "Available controls" list (previously created with the acquisition of commands) which can be associated by clicking on the "Associate to event" command.



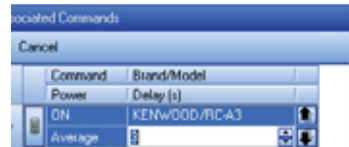
Every time a command is associated to an event it is entered in the following "Associated Commands" window.

Select the command and click on the "Cancel" key to cancel the associated command.

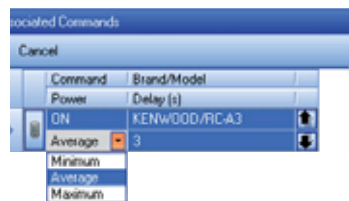


 **Warning:** Up to 4 commands can be associated to an event.

A time delay can be associated to each command. The stereo control waits for this time until performing the next command, to avoid losing some commands.  
 On clicking on the set default value (3), the field can be edited and a time delay (from 1 to 60 seconds) can be entered; set the delay as a function of your Hi-Fi system.



At the side of each associated command a field appears to set the signal power (Minimum, Average, Maximum); as default this value will be set on Average.



## 7. Import commands from project

This function lets you import remote controls in previously saved projects into your database.



Click on the "Open" window to open a previously saved project.

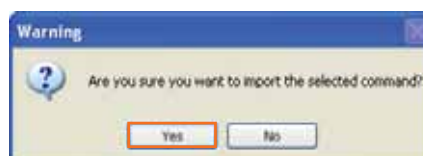
The following window appears where you can select the project (.xml) to open.



In the "Associated Commands" section any remote controls not in your database will be highlighted in red; on clicking on the pushbutton you can import the remote control and the associated commands into the current database.



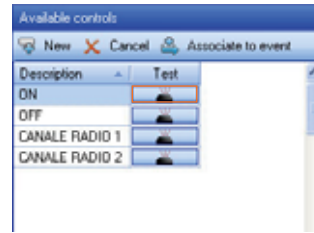
The following window will appear. Click on "Yes" to confirm that you want to import the selected command.



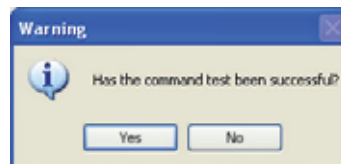
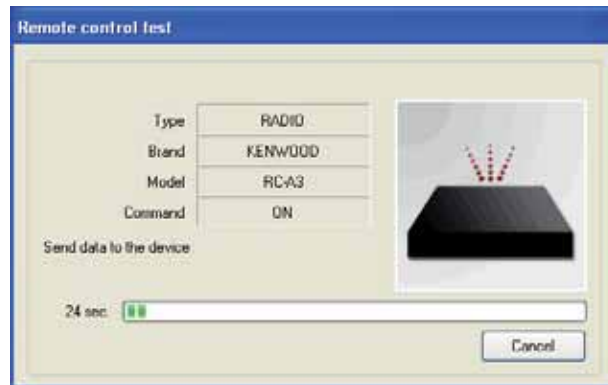


**8. "Available controls" test**

At the side of the previously created Available controls, select the "Test" function to check the operation of the individual command.



The following window appears where you can display the progress of the Event Test. At the end a message will appear. Click on the "Yes" pushbutton if the test has been successful.

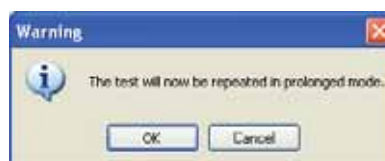


If not, click on the "No" pushbutton to repeat the Test in prolonged mode.

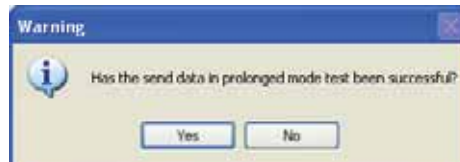
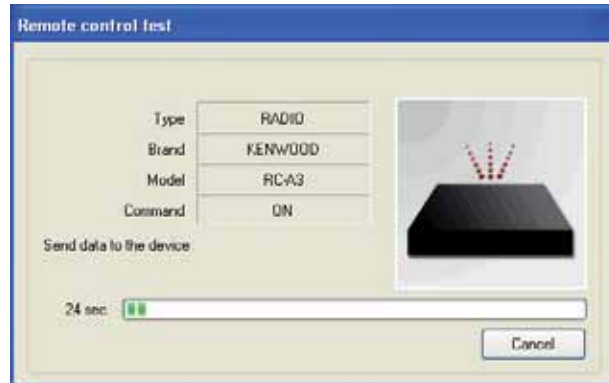
The following message will appear. Click on the "No" pushbutton to confirm that you want to repeat the Test in prolonged mode.



The following message will appear. Click on the "OK" pushbutton to start the Test.



The following window will appear where you can display the progress of the Event Test. At the end a confirmation message will appear. Click on the “Yes” pushbutton if the test has been performed correctly. If not check that the device is correctly connected to the PC.



## 9. “Events” test

On selecting the ON or OFF events, or a 4-source event, the test of the sequence associated with this event can be run by means of the Test function (on the Event window command bar). It is used to test (with device connected) the series of commands previously set to be performed for the selected event.



The following window will appear where you can display the progress of the Event Test. At the end a confirmation message will appear indicating that the test has been performed correctly. If not check that the device is correctly connected to the PC.

## 10. New project



Click on the “New” pushbutton to create a new project.

If the project has not yet been saved the following warning message will appear.

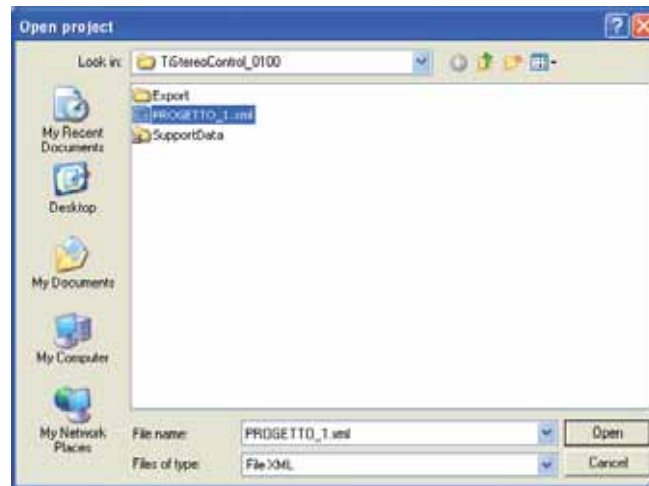


## 11. Open project



Click on the “Open” pushbutton to open a previously saved project.

The following window will appear where you can select the project (.xml) to open.

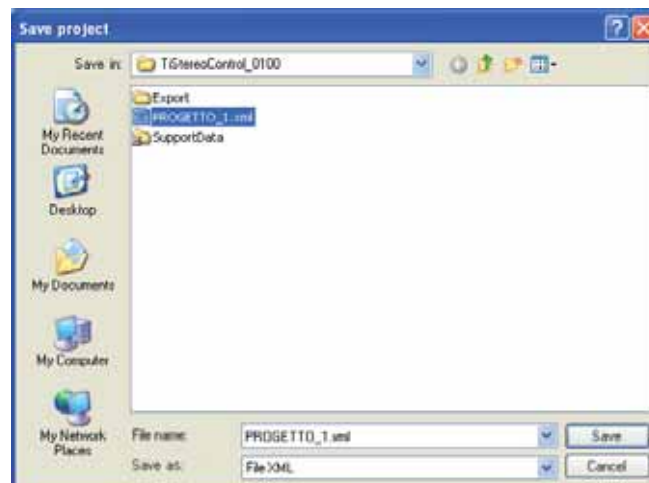


## 12. Save project



Click on the “Save” pushbutton to save the created project.

The following window will appear where you can save the project (.xml).



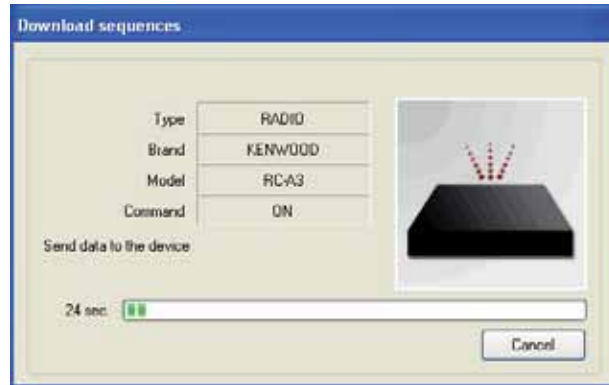
After updating the configuration perform the reset procedure described in the installation manual.

## 13. Download project

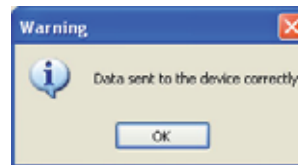


Click on the "Download" pushbutton to download the project created on the device.

The following window will appear with the download progress.



When the process is complete the following confirmation message will appear. If not check that the device is connected and that the serial port (COM) is correct.



## 14. Updating Firmware



Click on the **“Update”** pushbutton to update the firmware on the device.

### Running:

- Connect the device (item L4561N) to a PC.
- Click on the **“Update”** pushbutton

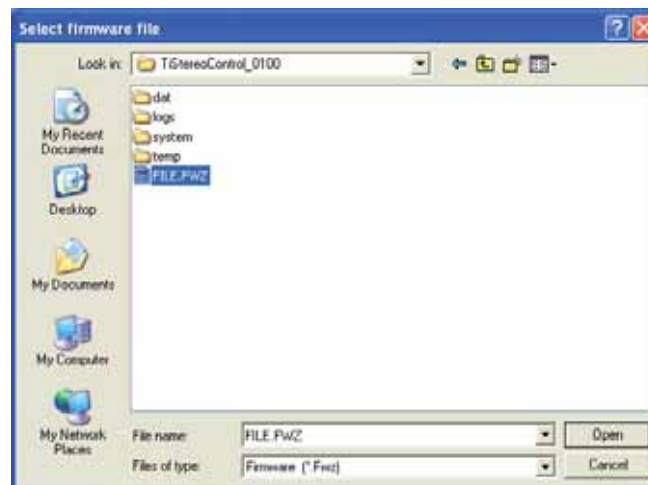
The **updating firmware** program window appears and the firmware can be downloaded in the device (item L4561N).



**Warning:** Make sure that the correct serial port has been selected.



- Click on the **“Info”** pushbutton to find out about the differences between the new firmware and the previous versions.
- Click on the program **“Select file”** icon. The following window will appear where you can select the .fwz file to install.



- Click on **“Open”** and then **“Update”** to perform the download.
- Click on the **“Quit”** icon to quit the Firmware Update program.
- Click on the **“Stop”** icon to stop the Firmware Update.







BTicino SpA  
Via Messina, 38  
20154 Milano - Italy  
[www.bticino.it](http://www.bticino.it)