

SFERA CLASSIC
8 pushbutton module

342480

Description

2 WIRE pushbutton module with 8 call pushbuttons. Connections to the system are made using the multicable supplied; also, name plates are illuminated by 12 green LEDs. To be used with speaker modules, items 342560 and 342350, and with modular "pushbutton" front covers with double row of keys.

The device must not be configured.

Related items

332461 (modular front cover with 6 pushbuttons - Allmetal)

332481 (modular front cover with 8 pushbuttons - Allmetal)

For the use of monobloc front covers refer to the catalogue.

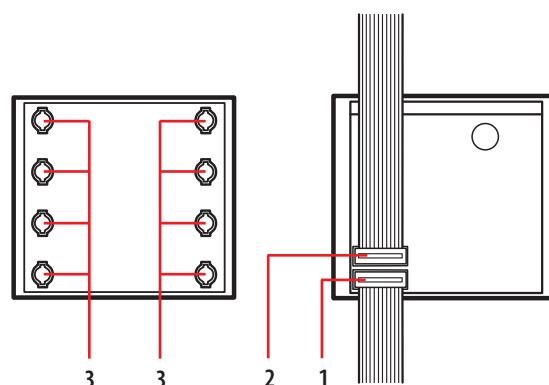
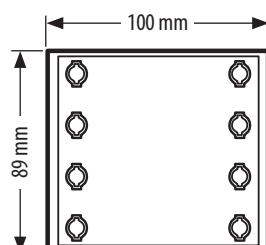
Technical data

Power supply from SCS BUS: 18 – 27 Vdc

Stand by absorption: 15 mA

Max. operating absorption: 15 mA

Operating temperature: (-25) – (+70) °C

Dimensional data

Legend

1 - Connector socket for output connection with other modules and for the last pushbutton module, housing for the electronic card supplied as standard with the speaker module.

2 - Input socket for connection with other modules.

3 - Call pushbuttons